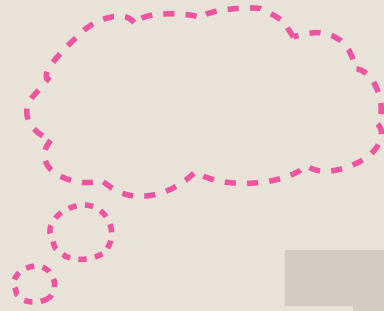


UNIVERSITY OF  
BIRMINGHAM

Inspiring minds,  
shaping the future



**Your ideas**  
could change the  
world around you

**Open Day programme**

12 September 2009, 10.00am–3.30pm

Open day information line: 0121 414 3374  
[www.bham.ac.uk](http://www.bham.ac.uk)

# Contents

<b>Welcome</b>	<b>3</b>
How to reach the University	4
Why choose the University of Birmingham?	5
The city of Birmingham	6
How to make the most of your day	8
Information and activities for parents and teachers	9
<b>General events timetable</b>	<b>10</b>
<b>Subject events timetable:</b>	
College of Engineering and Physical Sciences	12
College of Life and Environmental Sciences	14
College of Medical and Dental Sciences	16
College of Social Sciences	18
College of Arts and Law	20
Joint Honours courses	22

A map of the campus is on the back of this programme.



## BECOME A BIRMINGHAM VIP JOIN US ONLINE

Birmingham VIP is a regularly updated, personalised web page made available to all prospective undergraduate students featuring all the latest news about life at the University.

To join, visit [www.vip.bham.ac.uk](http://www.vip.bham.ac.uk) and complete the online registration form.

We look forward to welcoming you to Birmingham VIP!



[WWW.BHAM.AC.UK](http://WWW.BHAM.AC.UK)

# Welcome

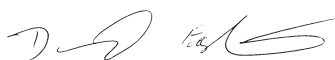
Choosing the right university isn't easy. I became Birmingham's Vice-Chancellor only recently, but seeing and experiencing the University first hand made the prospect of joining it irresistible. The University of Birmingham is a distinguished university, on a glorious campus, in a great city. Its attraction lies in the fact that its heritage reaches back over 100 years, and it looks forward as one of Britain's leading universities to the challenges and opportunities of this century: to the impact that its research and teaching will have on lives, societies and industries in the future. Our open days are designed to provide you with all the information you need to make an informed choice. There are talks and displays but, more importantly, there will be an opportunity to talk to the students and staff who live and work here, and we hope you leave with a picture of the real Birmingham.

This is one of the top universities in the UK and I am delighted that the recent results of the Research Assessment Exercise 2008 confirmed that the University's research has global reach: 89 per cent of the University's research activity was ranked as 'world leading' or 'internationally excellent'. Our teaching is very highly regarded and the quality of the student experience is amongst the best in the Russell Group. However, because we value our students so highly we are continuing to invest very substantially in our student facilities, services, and accommodation. We are also committed to improving the quality of student life and ensuring that you have access to all the support systems you need to help you achieve your potential. We also care deeply about making sure that our students feel socially integrated and supported so that they can fully benefit from university life.

During your time here the University will offer you opportunities to develop additional skills which, when combined with your academic progress, will make you still more valuable to employers. We are particularly committed to making sure that we respond to what our students need to help them develop their academic and personal capabilities: it is this that makes Birmingham students attractive to graduate recruiters. Our aim is that 'The Birmingham Graduate' will be a work of real quality.

I hope on your visit today you experience the same sense of Birmingham being not just a university but your university. If you do, you, like me, will benefit from Birmingham's eminent history, relish everything it has to offer to the modern student, and shape the future of this dynamic university.

With best wishes



Professor David Eastwood  
Vice-Chancellor



## The University

- Spends around £1 million each week on developing the campus and improving our students' learning experience
- Is at the forefront of cancer research in the UK
- Is home to the Visual and Spatial Technology Centre – the best-equipped archaeological visualisation laboratories in Europe
- Is a university of firsts: the first university to establish a faculty of commerce; the first to establish a medical school; the first to open a women's hall of residence; and the first to run a sports programme
- Continues that tradition of discovery with our research into the treatment of cancer, pioneering work on space science, and exciting developments in nanotechnology

# How to reach the University



We are pleased that you are planning to attend our open days this year. As part of our commitment to reducing our impact on the environment, we would strongly encourage you to travel by public transport when you visit the University.



Each year we welcome some 15,000 visitors to our open days; as a result, the adjacent roads and University car parks get very busy. The University has only a limited number of car parking spaces on open days and we would encourage you to plan your journey carefully.

## By rail

Being the only university in the country with its own station, the easiest way to reach the University is by train. Most cross-country services to Birmingham arrive at New Street station and up to six trains an hour depart for the University on the cross-city line (final destination Longbridge or Redditch). The journey time is approximately seven minutes. The centre of the main campus is a five-minute walk from University station. Student ambassadors (wearing lime green shirts) will be present at New Street station throughout the day to direct you.

## By coach

There are frequent express coach services to Birmingham from London, Heathrow and Gatwick airports and many other UK cities. The long-distance coach station is in Digbeth in the city centre.

## By bus

Numbers 61, 62, 63 and 64 travel to the University's Edgbaston and Selly Oak campuses, while the 21 and 44 serve the Medical School and Queen Elizabeth Hospital. These services all run frequently from the city centre.

## Parking on campus

The high number of visitors means that the University is only able to offer a limited number of spaces on these days. If you are intending to travel by car, the University has three main car parks: South, North and Pritchatts Road car parks – guides will be present to direct and assist visitors. Parking on campus is £1 per day (pay and display) unless you are parked in the park and ride car parks.

## Park and ride

In addition to the above parking areas, there will be two park and ride car parks with free shuttle bus services. These are based at King Edwards

School playing fields (B29 7JX) and Edgbaston cricket ground (B5 7QU) – both a short distance from the University.

Park and ride will be operating on a first-come, first-served basis. Shuttle buses to and from the University will be running throughout the day, dropping off and picking up from outside the University Centre (building R23 on the map on the back page).

## Useful links

Travel information, maps and directions:  
[www.location.bham.ac.uk](http://www.location.bham.ac.uk)  
National train information:  
[www.networkrail.co.uk](http://www.networkrail.co.uk)  
Travel West Midlands:  
[www.nationalrail.co.uk](http://www.nationalrail.co.uk)

We are keen to reduce our impact on the environment and have set targets to reduce our overall greenhouse gas emissions. To find out more about how the University is providing solutions, please visit [www.climatechange.bham.ac.uk](http://www.climatechange.bham.ac.uk)

# Why choose the University of Birmingham?

Choosing the right university is one of the most important decisions you will make. Here are some of the reasons why the University of Birmingham is right for you:

- We offer teaching from academics who are global experts in their field, undertaking research in everything from making chocolate taste nicer to developing Formula 1 cars
- The recent Research Assessment Exercise 2008 confirms we are the West Midland's top university and 12th in the UK\*, leading the way across a broad range of disciplines
- Our beautiful 250-acre parkland campus offers you a safe, friendly environment with all the facilities of a small town including bars, cafés, shops, banks, an art gallery, museums, a doctors' surgery and a railway station
- Our students have access to excellent study facilities including one of the UK's largest academic libraries, a wide range of online resources, open access computer suites across campus and a virtual learning environment
- Our Freshers' Guarantee Scheme for first-year students means that you will have a place to live at the heart of student life. For details of the Freshers' Guarantee Scheme see [www.housing.bham.ac.uk](http://www.housing.bham.ac.uk)
- With 4,500 overseas students from nearly 150 different countries, Birmingham is home to one of the largest communities of international students in the UK
- We are a top three sporting university and have some of the best facilities in the country, as well as professional coaching and imaginative health and fitness programmes, which offer a range of sporting opportunities to suit all tastes and ability levels
- Our students benefit from living in one of Europe's most vibrant cities: Birmingham has been transformed in the last 20 years to become a confident, modern commercial regional capital and one of the most culturally diverse cities in Britain



\* Using the Research Ranking Fortnight Power Ranking

'A really fantastic place with wonderfully friendly staff and students. I completely fell in love with the whole environment'

*Open day visitor*





# The city of Birmingham

Birmingham has been transformed into a city for young professionals and is one of Europe's most exciting destinations. It is more than somewhere to study; it is somewhere to build a successful career.



Birmingham is a modern and fascinating city: Famous for its historical industrial past, it is now a centre of arts and culture, commerce and entertainment, with a vibrant and diverse community. Birmingham is home to the largest financial services and creative sectors outside London. The thriving business community offers you a wealth of opportunities when you join the job market, and around 40 per cent of Birmingham graduates choose to make their home here after leaving University.

## Shopping and style

- **The Mailbox** – often referred to as Birmingham's answer to Bond Street, The Mailbox is a unique development which brings together designer fashion, lifestyle shops and an array of restaurants and café bars

- **Bullring** – Europe's largest city shopping centre development with more than 150 shops inside the iconic £530 million complex, which attracts visitors from across the UK

## Entertainment and events

- **Live entertainment** – top venues for big name bands and local talent include the Carling Academy, the National Indoor Arena (NIA), the National Exhibition Centre (NEC) and Symphony Hall, one of Europe's finest concert halls and home to the City of Birmingham Symphony Orchestra
- **Theatre** – Birmingham's principal theatres, the Repertory, Alexandra and Hippodrome, regularly host West End productions, as well as staging specially commissioned new work



The city of Birmingham offers visitors a wealth of attractions from cultural activities to shopping and sporting events. We have some first-class entertainment and eating places, and you may want to consider arriving the night before to get the most out of your visit. For more information about what the city offers, visit [www.beinbirmingham.com](http://www.beinbirmingham.com)



- **Food and drink** – Birmingham's multicultural character is reflected in our restaurants: you will find Caribbean, Chinese, Greek, French, Spanish, Thai and other international cuisines

#### A sporting city

- **Sporting events** – the city is home to many sporting events, including top level football at Aston Villa and Birmingham City, international cricket at Warwickshire County Cricket ground and prestigious golfing events at the Belfry
- **British city of sport** – Birmingham hosts more national and international sporting championships than any other city in the UK; not surprisingly, it was selected by the National Sports Council as the first British City of Sport

#### Places to visit

- **Birmingham museum and art gallery** – Birmingham's main museum and art gallery includes one of the finest collections of Pre-Raphaelite paintings in the world
- **Ikon Gallery** – showcases cutting-edge multimedia work by leading contemporary artists

- **Custard Factory** – former home of Bird's Custard has been transformed into a dynamic and Bohemian community of around 500 artists and small creative enterprises

#### Factfile: the city

- Birmingham is the safest major city in England and Wales according to a recent report by the Reform group [www.reform.co.uk](http://www.reform.co.uk)
- The NEC Group welcomes over five million visitors to its Birmingham venues each year, staging more exhibitions than any other European centre
- *The Lord of the Rings* author, J R R Tolkien, grew up in Birmingham, and the protected natural habitats that inspired *The Hobbit* can still be seen at Moseley, just minutes from the city centre
- Sherlock Holmes's creator, Sir Arthur Conan Doyle, also lived in the city
- The creation of the Football League in 1888 is credited to William McGregor, then a director of Aston Villa FC

# How to make the most of your day

## What's on offer?

In the Great Hall and the Marquee you will find a wide range of subject-specific stands as well as stands relating to sport, welfare, accommodation, finance, careers and other areas. Talks on a range of subjects take place throughout the day. The timetables for talks can be found on page ten onwards.

## General information

Prior to the open days, you can contact the Student Recruitment Team on 0121 414 3374. On the day, staff at the main reception area in the Aston Webb Building (R6 on the map) will be able to help you with general enquiries, directions and other information. Our student ambassadors will be wearing lime green shirts and will be present across the campus to help you find your way around.

## Tours of the Edgbaston campus

Guided walking tours of the main campus take place throughout the day, starting at 9.00am. They last between 45 minutes to an hour. The Campus Tour desk is situated in Chancellor's Court, adjacent to the Marquee.

## Viewing accommodation

At regular intervals throughout the day, visitors can view University accommodation. Visitors can either use the walking map to reach accommodation (this takes approximately 15 minutes) or there is a specially provided free bus service. Walking maps may be picked up from all information points and at the base of the clock tower. Buses depart from outside the Barber Institute of Fine

Arts (building R14 on the map). In order to avoid congestion you might want to avoid the busiest periods between 12.00 noon and 1.30pm. Buses run until 2.00pm and bus tours will take between 45 minutes to an hour.

More information on accommodation can be found at [www.housing.bham.ac.uk](http://www.housing.bham.ac.uk)

## Visitors with disabilities

We encourage students with disabilities to visit and study at the University. Over the past three years we have been implementing a programme of accessibility adaptations on campus; this includes the installation of lifts and accessible toilets and improved signage. All new buildings and major conversions are being designed with accessibility in mind.

- A mobility map is available (from the Aston Webb reception), which gives an overview of the Edgbaston campus showing the main access routes for wheelchair users
- If you have a disability or special requirements please advise us in advance so that we can send you a map and make parking arrangements  
Tel: 0121 414 3374

For more information please visit our website at: [www.sscs.bham.ac.uk/disability](http://www.sscs.bham.ac.uk/disability)

## Open Day Buddy Scheme

If you have travelled alone to the Open Day, you may wish to take advantage of our Open Day Buddy

Scheme. This allows you to meet up with one of our current students and talk to them about their experiences of student life. The Open Day Buddy Scheme will be operating from the Campus Tour Desk (Chancellor's Court) throughout the day.

## Lost persons and property

Lost persons should report to the Aston Webb Reception, Aston Webb Building (R6).  
Tel: 0121 414 8130  
or contact a student ambassador

Lost property should be taken to the Aston Webb Reception, Aston Webb Building (R6).  
Tel: 0121 414 8130

## Emergencies

First aid assistance can be found in the Great Hall, Aston Webb Building (R6).  
Tel: 0121 414 4444

Note: map and building references throughout this brochure relate to the Edgbaston campus map at the back of this programme.

## Learn more

You can view our online videos at [www.undergraduate.bham.ac.uk/videoaudio](http://www.undergraduate.bham.ac.uk/videoaudio) or visit our YouTube channel [www.youtube.com/unibirmingham](http://www.youtube.com/unibirmingham). You can also join us on Facebook (University of Birmingham) to find out more about student life and talk to current students.



# Information and activities for parents and teachers

## Places to relax for parents

If you are accompanying your son or daughter, or a school group on their Open Day visit, you may want to go your separate ways for a time. You're welcome to take a break and relax in our Café Aroma, Staff House (building R24 on the map) between 10.00am and 3.30pm. If you're visiting our student accommodation, you may also want to enjoy a coffee in Rio's, located in Shackleton on the Vale Village.

The Botanic Garden at Winterbourne is a great place to enjoy a packed lunch. Open to visitors from 11.00am–3.00pm (entry £3), the gardens are the perfect place to escape the crowds of Open Day (location G12 on the map).

## Activities and talks for parents and teachers

Our student finance talks include information on Birmingham's Grant and Scholarship scheme and other sources of funding. These talks take place at 11.15am and 2.15pm in the Avon Lecture Theatre (building R23 on the map).

## The Barber Institute of Fine Arts

The University's award-winning Barber Institute of Fine Arts features major works by world renowned

artists, housing an important collection of works of art from the 13th to the 20th century. Highly recommended if you have 30 minutes or more available.

Alternatively you can join the free guided tour of galleries at 12.45pm. This departs from the main foyer on the ground floor of the Barber Institute (R14).

## Opening hours

10.00am–5.00pm – Admission is free (building R23 on the map)

## Learn more

[www.barber.org.uk](http://www.barber.org.uk)

## Other activities to schedule

To find out more about our library services, why not join a library tour? Tours depart every hour from 10.30am to 2.30pm from the iLounge, Main Library (building R22 on the map).

## The Guild of Students

The Guild, our students' union, is the hub of undergraduate life. Run by students for students, there are over 150 clubs and societies to join, reflecting the tastes and interests of our diverse community; societies range from ten-pin bowling and debating to movies and hang-gliding. You can get involved in student

radio via BURN FM, or the student newspaper *Redbrick* and there are diverse opportunities for volunteering in the local community via the Guild's Community Action Scheme. The Guild also provide the Job Zone service. The Guild is open throughout Open Day (building O1 on the map).

## Learn more

[www.guildofstudents.com](http://www.guildofstudents.com) or watch videos about student life at: [www.undergraduate.bham.ac.uk/videoandaudio](http://www.undergraduate.bham.ac.uk/videoandaudio)

## Multi-faith Chaplaincy

The large team of chaplains, (some full-time and others part-time) represent Buddhism, Christianity, Hinduism, Islam and Judaism. They extend a warm welcome to all people whatever their religious background.

The Edgbaston Chaplaincy building, St Francis Hall (building O2 on the map), is located next to the Guild of Students. Please feel free to visit during Open Day. More information may be found on our website at: [www.chaplaincy.bham.ac.uk](http://www.chaplaincy.bham.ac.uk)



# General events timetable

Subject	Description	Time(s)	Venue
Accommodation	Display and information desk	All day	Great Hall, Ground Floor, Aston Webb Building (R6)
Accommodation	Talks	10.30am, 12.00pm and 12.45pm	Avon Lecture Theatre, Top Floor, University Centre (R23)
Accommodation	Tours	9.30am–2.00pm (busiest periods between 12.00pm and 1.30pm)	Bus departs from outside the Barber Institute of Fine Arts (R14)
Admissions	Display and information desk	All day	Great Hall, Ground Floor, Aston Webb Building (R6)
Barber Institute of Fine Arts	Art gallery	All day 10.00am–5.00pm	Barber Institute of Fine Arts (R14)
Botanic Gardens, café and shop	Botanic gardens	11.00am–3.00pm	Winterbourne (G12)
Careers and Employability	Display and information desk	All day	Great Hall, Ground Floor, Aston Webb Building (R6)
Finance – Money Matters	Display and information desk	All day	Great Hall, Ground Floor, Aston Webb Building (R6)
Finance – Money Matters	Talk: A guide to student finance	11.15am and 2.15pm	Avon Lecture Theatre, Top Floor, University Centre (R23)
Guild of Students	Display and information desk	All day	Great Hall, Ground Floor, Aston Webb Building (R6)
International Relations	Display	All day	Great Hall, Ground Floor, Aston Webb Building (R6)
International students	Talk	11.15am	Lecture Theatre G33, Ground Floor, Aston Webb Building
Joint Honours	Talk: Admissions into Joint Honours and Arts disciplines	10.30am	Large Lecture Theatre (120), 1st Floor, Arts Building (R16)
Library Services, IT Services and Learning Development	Display and information desk	All day	iLounge, Ground Floor, Main Library (R22)
Library	Tours	10.30am, 11.30am, 12.30pm, 1.30pm and 2.30pm	Meet in the iLounge Ground Floor, Main Library (R22)
Music Society	Display and information desk	All day	Marquee, Chancellor's Court
Opportunities to study abroad as part of your Birmingham degree	Talk	11.15am	Lecture Theatre 5, 2nd Floor, Arts Building (R16)
Security	Display and information desk	All day	Great Hall, Ground Floor, Aston Webb Building (R6)
Sport (University of Birmingham Sport)	Display and information desk	All day	Great Hall, Ground Floor, Aston Webb Building (R6)
Sport (University of Birmingham Sport)	Display and information desk	All day	New Gym, Ground Floor, Munrow Sports Centre (R25)

Subject	Description	Time(s)	Venue
Sport (University of Birmingham Sport)	Talk: Playing sport at the University of Birmingham	10.30am, 12.00pm, 1.30pm and 2.15pm	Dance Studio, Lower Ground Floor, Munrow Sports Centre (R25)
Disability and Learning Support Service	Display and information desk	All day	Great Hall, Ground Floor, Aston Webb Building (R6)
Student life	Talk: Student life by students	12.00pm, 1.30pm and 2.15pm	Debating Hall, 1st Floor, Guild of Students (O1)
Tips for Applicants	Talks	12.00pm and 1.30pm	Lecture Theatre WG5, Ground Floor, Aston Webb Building (R6)
Tips for Applicants	Talk	2.15pm	Lecture Theatre G33 Ground Floor, Aston Webb Building
Welcome and Tips for your Day	Talk	10.00am 10.30am	Vaughan Jeffries Lecture Theatre, 1st Floor, Education Building (R19)
Year in Industry	Display and information desk	All day	Great Hall, Ground Floor, Aston Webb Building (R6)
Year in Industry	Talks	11.15am and 1.30pm	Lecture Room 4, 1st Floor, Arts Building (R16)



# Subject events timetable

## College of Engineering and Physical Sciences

This college includes the following subject areas: Chemical Engineering; Chemistry; Civil Engineering; Computer Science; Electronic, Electrical and Computing Engineering; Mathematics; Mechanical Engineering; Metallurgy and Materials; Physics and Astronomy.

Subject	Description	Time(s)	Venue
Chemical Engineering	Display and information desk	All day	Great Hall, Ground Floor, Aston Webb Building (R6)
Chemical Engineering	Display and information desk	All day	Foyer, Ground Floor, Chemical Engineering Building (Y11)
Chemical Engineering	Talk: Chemical Engineering – Engineering Products for the Consumer	10.30am 2.15pm	Room 203, 2nd Floor, Haworth Building (Y2)
Chemistry	Displays and hands-on experiments	All day	209a (Seminar Room), 1st Floor, Haworth Building (Y2)
Chemistry	Display and information desk	All day	216 (Reading Room), 1st Floor, Haworth Building (Y2)
Chemistry	Display and information desk	All day	Great Hall, Ground Floor, Aston Webb Building (R6)
Chemistry	Talk: Chemistry at University and Beyond	11.15am 12.45pm	Lecture Theatre 101, Ground Floor, Haworth Building (Y2)
Chemistry	Talk: Chemical Magic	12.00pm	Lecture Theatre 101, Ground Floor, Haworth Building (Y2)
Civil Engineering	Display and information desk	All day	Great Hall, Ground Floor, Aston Webb Building (R6)
Civil Engineering	Display and information desk	All day	Design Centre, 2nd Floor, Mechanical Engineering (Y3)
Civil Engineering	Tours	All day	Design Centre, 2nd Floor, Mechanical Engineering (Y3)
Civil Engineering	Talk: Constructing the Future	12.45pm	Room 203, 2nd Floor, Haworth Building (Y2)
Computer Science	Display and information desk	All day	Great Hall, Ground Floor, Aston Webb Building (R6)
Computer Science	Displays, meeting staff, current students and student-led tours	All day	Atrium, Ground Floor, Computer Science Building (Y9)
Computer Science	Consultation with the UG Admissions Tutor	2.15pm	Room UG40, Ground Floor, Computer Science Building (Y9)
Computer Science	Talk: Why Computer Science at Birmingham?	10.30am 12.45pm	Room UG04, Ground Floor, Learning Centre (R28)
Computer Science	Talk: What is Computer Science? What do Computer Scientists do?	11.15am	Room UG04, Ground Floor, Learning Centre (R28)
Computer Science	Talk: Can Computers Think?	12.00pm	Room UG04, Ground Floor, Learning Centre (R28)



Subject	Description	Time(s)	Venue
Computer Science	Talk: Computing in Medicine	1.30pm	Room UG04, Ground Floor, Learning Centre (R28)
Electronic, Electrical and Computer Engineering	Display and information desk	All day	Great Hall, Ground Floor, Aston Webb Building (R6)
Electronic, Electrical and Computer Engineering	Display, information desk and tours	All day	Foyer, Ground Floor, Gisbert Kapp Building (G8)
Electronic, Electrical and Computer Engineering	Talk: Degree programmes in Electronic, Electrical and Computer Engineering	12.45pm	Room 521/522, 5th Floor, Gisbert Kapp Building (G8)
Electronic, Electrical and Computer Engineering	Talk: Serious Games for Defence, Surgery and Heritage – a New Future for Engineering	2.15pm	Room 521/522, 5th Floor, Gisbert Kapp Building (G8)
Mathematics	Display and information desk	All day	Foyer, Ground Floor, Watson Building (R15)
Mathematics	Talk: Careers, Degrees and Mathematics	11.15am 12.45pm	Lecture Room A, Ground Floor, Watson Building (R15)
Mathematics	What is Mathematics?	12.00pm 1.30pm	Lecture Room A, Ground Floor, Watson Building (R15)
Mechanical Engineering	Display and information desk	All day	Great Hall, Ground Floor, Aston Webb Building (R6)
Mechanical Engineering	Display and information desk	All day	Design Centre, 2nd Floor, Mechanical Engineering (Y3)
Mechanical Engineering	Racing cars display; members of the Mechanical Automotive racing team in attendance	All day	Automotive Laboratory, Room G61, Ground Floor, Mechanical Engineering Building (Y3)
Mechanical Engineering	Talk – Degree Programmes in Mechanical Engineering	12:00pm	Room 203, 2nd Floor, Haworth Building (Y2)
Metallurgy and Materials	Display and information desk	All day	Great Hall, Ground Floor, Aston Webb Building (R6)
Physics and Astronomy	Display and demonstrations	All day	First Floor Laboratory, Ground Floor, Poynting Physics Building (R13)
Physics and Astronomy	DVD – Why Physics at Birmingham?	All day	Coffee Lounge, 2nd Floor, Poynting Physics Building (R13)
Physics and Astronomy	Tour of Nanotechnology Research area (you must have signed up to this event)	11.15am	Foyer, Ground Floor, Poynting Physics Building (R13)
Physics and Astronomy	Talk – Seven Wonders of the Nano World	10.30am	Lecture Theatre SO6, 2nd Floor, Poynting Physics Building (R13)
Physics and Astronomy	Talk – Exploring our Dark Universe	12.00pm	Lecture Theatre SO6, 2nd Floor, Poynting Physics Building (R13)
Physics and Astronomy	Talk – Physics to a Degree	12.45pm	Lecture Theatre SO6, 2nd Floor, Poynting Physics Building (R13)
Physics and Astronomy	Talk – Recreating the Big Bang: the LHC at CERN	1.30pm	Lecture Theatre SO6, 2nd Floor, Poynting Physics Building (R13)
Physics and Astronomy	Talk – Refrigerators made from Photons	2.15pm	Lecture Theatre SO6, 2nd Floor, Poynting Physics Building (R13)

## College of Life and Environmental Sciences

This college includes the following subject areas: Biosciences; Geography, Earth and Environmental Sciences; Psychology; Sport and Exercise Sciences.

Subject	Description	Time(s)	Venue
Biosciences	Advice desks and displays for Human Biology, Biological Sciences and Biochemistry	All day	Great Hall, Ground Floor, Aston Webb Building (R6)
Biosciences	Advice desks and displays for Human Biology, Biological Sciences and Biochemistry	All day	Undercroft, Ground Floor, Biosciences Building (R27)
Biosciences	Talk: Biosciences degree programmes – an overview of all our programmes, Biological Sciences, Human Biology and Biochemistry	10.00am	Lecture Theatre NG08, Ground Floor, Biosciences Building (R27)
Biosciences	Talk: Careers in Biosciences	10.30am	Lecture Theatre NG08, Ground Floor, Biosciences Building (R27)
Biosciences	Talk: Old drugs new diseases; tackling cancer from Birmingham to Sub-Saharan Africa	11.15am	Lecture Theatre NG08, Ground Floor, Biosciences Building (R27)
Biosciences	Talk: Biosciences degree programmes – an overview of all our programmes, Biological Sciences, Human Biology and Biochemistry	12.00pm	Lecture Theatre NG08, Ground Floor, Biosciences Building (R27)
Biosciences	Overflow Talk – Biosciences degree programmes – an overview of all our programmes, Biological Sciences, Human Biology and Biochemistry	12.00pm	Room E102, 1st Floor, Biosciences Building (R27)
Biosciences	Talk: Darwin and evolution in Birmingham	12.45pm	Lecture Theatre NG08, Ground Floor, Biosciences Building (R27)
Biosciences	Talk: Careers in Biosciences	1.30pm	Lecture Theatre NG08, Ground Floor, Biosciences Building (R27)
Biosciences	Talk: Four year degree programmes : gain work experience or study abroad	1.30pm	Room E102, 1st Floor, Biosciences Building (R27)
Biosciences	Talk: Biosciences degree programmes – an overview of all our programmes, Biological Sciences, Human Biology and Biochemistry	2.15pm	Lecture Theatre NG08, Ground Floor, Biosciences Building (R27)

Subject	Description	Time(s)	Venue
Environmental Science	Display and information desk	All day	Great Hall, Ground Floor, Aston Webb Building (R6)
Environmental Science	Talk: The Environmental Science and Management programmes	11.15am	Room E102, 1st Floor, Biosciences Building (R27)
Geography	Display and information desk	All day	Great Hall, Ground Floor, Aston Webb Building (R6)
Geography	Display, tours and information desk	All day	Foyer, Ground Floor, Geography Building (R26)
Geography	Talk: Studying Geography at Birmingham	11.15am 1.30pm	Room 203, 1st Floor, Haworth Building (Y2)
Geology	Display and information desk	All day	Great Hall, Ground Floor, Aston Webb Building (R6)
Geology	Display and information desk	All day	Lapworth Museum, Ground Floor, Aston Webb Building (R4)
Geology	Talk: Geology at Birmingham and beyond	12.00pm 1.30pm	Dome Lecture Theatre, 2nd Floor, Aston Webb Building (R4)
Natural Sciences	Display and information desk	All day	Great Hall, Ground Floor, Aston Webb Building (R6)
Natural Sciences	Talk: Studying across the sciences	12.45pm	Room E102, 1st Floor, Biosciences Building (R27)
Psychology	Display and information desk	All day	Great Hall, Ground Floor, Aston Webb Building (R6)
Psychology	Displays and information desk	All day	Foyer, Ground Floor, Hills Building (R3)
Psychology	Talk: Studying Psychology at Birmingham	11.15am 2.15pm	Lecture Theatre WG5, Ground Floor, Aston Webb Building (R4)
Sport and Exercise Sciences	Display and information desk	All day	Great Hall, Ground Floor, Aston Webb Building (R6)
Sport and Exercise Sciences	Display with brochures	All day	Atrium, Ground Floor, Sport and Exercise Building (Y14)
Sport and Exercise Sciences	Talks – Studying Sport and Exercise Sciences in the School of Sport and Exercise Sciences	10.30am 11.15am 12.00pm 12.45pm 1.30pm 2.15pm	Lecture Theatre 1, 1st Floor, Sport and Exercise Sciences Building (Y14)

## College of Medical and Dental Sciences

This college includes the following subject areas: Medicine; Medical Sciences; Dentistry; Dental Hygiene; Nursing; Physiotherapy.

Subject	Description	Time(s)	Venue
Biomedical Materials Science	Display and information desk	All day	Great Hall, Ground Floor, Aston Webb Building (R6)
Dental Hygiene and Therapy	Display and information desk	All day	Common Room, Ground Floor, Wolfson Centre for Medical Education, Medical School (B1)
Dental Hygiene and Therapy	Talk: BSc Dental Hygiene and Therapy	12.00pm	Arthur Thompson Hall, 3rd Floor, Medical School (B1)
Dentistry	Display and information desk (BDS, BSc)	All day	Common Room, Ground Floor, Wolfson Centre for Medical Education, Medical School (B1)
Dentistry	Talk: Dentistry at Birmingham (BDS)	10.30am 1.30pm	Arthur Thompson Hall, 3rd Floor, Medical School (B1)
Medical Science	Talk: Medical Science (BMedSc)	12.00pm	Leonard Deacon Lecture Theatre, 1st Floor, Medical School (B1)
Medicine	Display and information desks (MBChB, BMedSc)	All day	Great Hall, Ground Floor, Aston Webb Building (R6)
Medicine	Display and information desks (MBChB, BMedSc)	All day	Common Room, Ground Floor, Wolfson Centre for Medical Education, Medical School (B1)
Medicine	Talk: Getting into Medicine (MBChB)	9.30am 11.15am 1.30pm	Leonard Deacon Lecture Theatre, 1st Floor, Medical School (B1)
Medicine	Talk: Student life in the Medical School	12.45pm 2.15pm	Leonard Deacon Lecture Theatre, 1st Floor, Medical School (B1)
Nursing	Lecturers and students will be available for advice and tours	All day	Ground Floor, Health Sciences Building (G9)
Nursing	Demonstrations	All day	Ground Floor, Health Sciences Building (G9)





Subject	Description	Time(s)	Venue
Nursing	Talk: Nursing taster lecture. Available for 40 students. Collect a ticket, on a first-come first-served basis (one per student), from the desk in the foyer at Health Sciences Building (G9). Parents will not be able to attend the lecture but can relax and enjoy refreshments in the café. The lecture will last 30 minutes.	12.45pm	Lecture Theatre 1, Ground Floor, Health Sciences (G9)
Nursing	Talk: Applying for Nursing	10.00am 11.15am 1.30pm	Lecture Theatre 1, Ground Floor, Health Sciences (G9)
Physiotherapy	Lecturers and students will be available for advice and tours	All day	Ground Floor, Health Sciences Building (G9)
Physiotherapy	Talk: Physiotherapy at the University of Birmingham	10.30am 1.30pm	E203, 2nd Floor, Gisbert Kapp Building (G8)
Physiotherapy	Talk: Physiotherapy taster lecture. Available for 40 students. Collect a ticket, on a first-come first-served basis (one per student), from the desk in the foyer at Health Sciences Building (G9). Parents will not be able to attend the lecture but can relax and enjoy refreshments in the café. The lecture will last 30 minutes.	12.00pm	Lecture Theatre 1, Ground Floor, Health Sciences (G9)

## College of Social Sciences

This college includes the following subject areas: Business; Education; Government and Society; Social Policy.

Subject	Description	Time(s)	Venue
Accounting and Finance	Display and information desk	All day	Great Hall, Ground Floor, Aston Webb Building (R6)
Accounting and Finance	Talk: BSc Accounting and Finance degree at the University of Birmingham Business School	10.30am 12.00pm	Lecture Theatre G12, Ground Floor, University House (O3)
Applied Golf Management Studies	Display and information desk	All day	Great Hall, Ground Floor, Aston Webb Building (R6)
Applied Golf Management Studies	Display and information desk	All day	Atrium, Ground Floor, Sport and Exercise Sciences Building (Y14)
Applied Golf Management Studies	Talk: Introduction to Applied Golf Management Studies	10.30am 12.00pm 1.30pm	Lecture Theatre 2, 1st Floor, Sport and Exercise Sciences Building (Y14)
Business Management	Display and information desk	All day	Great Hall, Ground Floor, Aston Webb Building (R6)
Business Management	Talk: BSc Business Management degrees at the University of Birmingham Business School	11.15am 12.45pm 1.30pm	Lecture Theatre G12, Ground Floor, University House (O3)
Business School	Open for questions	All day	University House, (O3)
Centre for Russian and East European Studies	Display and information desk	All day	Marquee, Chancellor's Court
Centre for Russian and East European Studies	Talk: Russian Studies	12.45pm	Lecture Theatre 7, 2nd Floor, Arts Building (R16)
Centre for Russian and East European Studies	Russian Taster Session for Beginners	1.30pm	Lecture Theatre 7, 2nd Floor, Arts Building (R16)
Centre for Urban and Regional Studies	Display and information desk	All day	Great Hall, Ground Floor, Aston Webb Building (R6)
Centre for Urban and Regional Studies	Talk: Opportunities in Urban and Regional Planning	12.45pm	Room G03, Ground Floor, University House, (O3)
Economics	Display and information desk	All day	Great Hall, Ground Floor, Aston Webb Building (R6)
Economics	Talk: Economics and related degrees	10.00am 12.00pm	Lecture Theatre SO2, 2nd Floor, Poynting Physics Building (R13)

Subject	Description	Time(s)	Venue
Education	Display and information desks for BA Childhood, Culture and Education, BA English and Literature and PGCE programmes	All day	Great Hall, Ground Floor, Aston Webb Building (R6)
Education	Talk: Introduction to Childhood, Culture and Education	12.00pm 1.30pm	Room 112, 1st Floor, Muirhead Tower (R21)
Education	Talk: Routes into Teaching	11.15am	Main Lecture Theatre, Ground Floor, Muirhead Tower (R21)
Education	Talk: Introduction to English Language and Literature in Education	12.45pm	Room 112, 1st Floor, Muirhead Tower (R21)
European Politics, Society and Economics	Display and information desk	All day	Marquee, Chancellor's Court
European Politics, Society and Economics	Talk: BSc European Politics, Society and Economics (EPSE)	1.30pm	Lecture Theatre 6, 2nd Floor, Arts Building (R16)
Institute of Applied Social Studies and Social Policy	Display and information desk	All day	Marquee, Chancellor's Court
Media, Culture and Society	Display and information desk	All day	Marquee, Chancellor's Court
Media, Culture and Society	Talk: Media, Culture and Society	2.15pm	Main Lecture Theatre, Ground Floor, Muirhead Tower (R21)
Political Science and International Studies	Display and information desk	All day	Marquee, Chancellor's Court
Political Science and International Studies	Talk: Introduction to Political Science	12.00pm	Main Lecture Theatre, Ground Floor, Muirhead Tower (R21)
Political Science and International Studies	Talk: Introduction to International Studies	12.45pm	Main Lecture Theatre, Ground Floor, Muirhead Tower (R21)
Sociology	Display and information desk	All day	Marquee, Chancellor's Court
Sociology	Talk: Studying Sociology at Birmingham	1.30pm	Main Lecture Theatre, Ground Floor, Muirhead Tower (R21)
Social Policy	Display and information desk	All day	Marquee, Chancellor's Court
Social Policy	Talk: Social Science and Social Policy	1.30pm	Lecture Room 2, 1st Floor, Arts Building (R16)
Social Work	Display and information desk	All day	Marquee, Chancellor's Court
Social Work	Talk: Why Social Work?	12.45pm	Lecture Room 2, 1st Floor, Arts Building (R16)
Sport, Physical Education and Coaching Science	Display and information desk	All day	Great Hall, Ground Floor, Aston Webb Building (R6)
Sport, Physical Education and Coaching Science	Display and information desk	All day	Atrium, Ground Floor, Sport and Exercise Sciences Building (Y14)
Sport, Physical Education and Coaching Science	Talk: Introduction to Sport, Physical Education and Coaching Science	11.15am 12.45pm 2.15pm	Lecture Theatre 2, 1st Floor, Sport and Exercise Sciences Building (Y14)

## College of Arts and Law

This college includes the following subject areas: Law; Philosophy and Theology; Archaeology and Antiquity; Medieval History; Modern History; African Studies; European Cultures and Languages; Music; and English, Drama and American & Canadian Studies.

Subject	Description	Time(s)	Venue
African Studies	Display and information desk	All day	Marquee, Chancellor's Court
African Studies	Talk: African Studies, Anthropology and Development at Birmingham	12.45pm	Danford Room 224, 2nd Floor, Arts Building (R16)
American and Canadian Studies	Display and information desk	All day	Marquee, Chancellor's Court
American and Canadian Studies	Talk: What is American Studies?	11.15am	Lecture Room 360, 3rd Floor, Arts Building (R16)
American and Canadian Studies	Talk: American Studies at the University of Birmingham	13.30pm	Lecture Room 360, 3rd Floor, Arts Building (R16)
Ancient and Medieval History	Talk: Ancient and Medieval History at Birmingham	12.45pm	Lecture Theatre 3, 1st Floor, Arts Building (R16)
Anthropology	Display and information desk	All day	Marquee, Chancellor's Court
Anthropology	Talk: African Studies, Anthropology and Development at Birmingham	12.45pm	Danford Room 224, 2nd Floor, Arts Building (R16)
Arabic Studies	Display and information desk	All day	Marquee, Chancellor's Court
Archaeology and Antiquity	Display and information desk	All day	Marquee, Chancellor's Court
Archaeology and Antiquity	Talk: Archaeology and Ancient History	11.15am	Lecture Theatre 1, 1st Floor, Arts Building (R16)
Archaeology and Antiquity	Talk: Classical Literature and Civilization	12.00pm	Lecture Theatre 1, 1st Floor, Arts Building (R16)
Centre for European Languages	Display and information desk	All day	Marquee, Chancellor's Court
Centre for European Languages	Talk: Modern Languages and European Studies	12.00pm	Lecture Theatre 4, 1st Floor, Arts Building (R16)
Centre for European Languages	Talk: Culture, Society and Communication (Europe)	12.45pm	Lecture Theatre 6, 2nd Floor, Arts Building (R16)
Centre for European Languages	Talk: Studying more than one language at Birmingham	1.30pm	Lecture Theatre 3, 1st Floor, Arts Building (R16)
Centre for European Languages	Talk: Studying Modern Languages with Film Studies at Birmingham	1.30pm	Lecture Theatre 3, 1st Floor, Arts Building
Centre for Modern Languages	Display and information desk	All day	Marquee, Chancellor's Court



Subject	Description	Time(s)	Venue
Centre for Modern Languages	Talk: Studying Arabic in the University of Birmingham	11.15am	Lecture Theatre 8, 3rd Floor, Arts Building (R16)
Centre for Modern Languages	Talk: Studying Japanese in the University of Birmingham	12.45pm	Lecture Theatre 8, 3rd Floor, Arts Building (R16)
Centre for Modern Languages	Talk: Studying Chinese in the University of Birmingham	1.30pm	Lecture Theatre 8, 3rd Floor, Arts Building (R16)
Culture, Society and Communication	Display and information desk	All day	Marquee, Chancellor's Court
Drama and Theatre Arts	Display and information desk	All day	Marquee, Chancellor's Court
Drama and Theatre Arts	Talk and opportunity to see the facilities at Selly Oak Campus	11.15am 1.45pm	George Cadbury Hall, Selly Oak Campus Bus departs promptly from outside the Education Building (R19) Please allow 1 hour 45 minutes to complete this tour
English	Display and information desk	All day	Marquee, Chancellor's Court
English	Talk: English	12.00pm 2.15pm	Large Lecture Theatre (120) 1st Floor, Arts Building (R16)
French Studies	Display and information desk	All day	Marquee, Chancellor's Court
French Studies	Talk: The French degree at Birmingham	12.45pm	Large Lecture Theatre (120) 1st Floor, Arts Building (R16)
French Studies	French taster session	1.30pm	Lecture Theatre 4, Ground Floor, Strathcona Building (R18)
German Studies	Display and information desk	All day	Marquee, Chancellor's Court
German Studies	Talk: German Studies at Birmingham	11.15am	Lecture Theatre 3, 1st Floor, Arts Building (R16)
German Studies	German taster session	12.00pm	Lecture Theatre 3, 1st Floor, Arts Building (R16)
Hispanic Studies	Display and information desk	All day	Marquee, Chancellor's Court
Hispanic Studies	Talk: Hispanic Studies at the University of Birmingham	11.15am	Lecture Theatre 6, 2nd Floor, Arts Building (R16)
History	Display and information desk	All day	Marquee, Chancellor's Court
History	Talks – History at Birmingham (including History, Economic and Social History and History and Social Science programmes)	11.15am 1.30pm	Large Lecture Theatre (120) 1st Floor, Arts Building (R16)
History of Art	Display and information desk	All day	Marquee, Chancellor's Court
History of Art	Talk: Art History at Birmingham	1.30pm	Lecture Theatre, Ground Floor, Barber Institute of Fine Arts (R14)
History of Art	Tour: A guided tour of the galleries at the Barber Institute of Fine Arts (R14)	12.45pm	Foyer, Ground Floor, Barber Institute of Fine Arts (R14)
Italian Studies	Display and information desk	All day	Marquee, Chancellor's Court
Italian Studies	Talk: Studying Italian	2.15pm	Lecture Theatre 4, 1st Floor, Arts Building (R16)

Subject	Description	Time(s)	Venue
Law	Display and information desk	All day	Marquee, Chancellor's Court
Law	Talk: Studying Law at Birmingham	10.30am 11.15am 1.30pm	Lecture Theatre 1, 3rd Floor, Law Building (R1)
Medieval English and History	Display and information desk	All day	Marquee, Chancellor's Court
Medieval English and History	Talk: Medieval English and History at Birmingham	12.00pm	Lecture Theatre 2, 1st Floor, Arts Building (R16)
Music	Display and information desk	All day	Marquee, Chancellor's Court
Music	Talk: Music at Birmingham	11.15am	Concert Hall, Ground Floor, Barber Institute of Fine Arts (R14)
Oriental Studies	Display and information desk	All day	Marquee, Chancellor's Court
Philosophy	Display and information desk	All day	Marquee, Chancellor's Court
Philosophy	Talk: Studying Philosophy at Birmingham	12.00pm	Lecture Theatre 7, 2nd Floor, Arts Building (R16)
Theology and Religion	Display and information desk	All day	Marquee, Chancellor's Court
Theology and Religion	Talk: Theology and Islamic Studies at Birmingham	12.00pm	Lecture Theatre 6, 2nd Floor, Arts Building (R16)
War Studies	Talk: War Studies at Birmingham	10.00am	Lecture Theatre 1, 1st Floor, Arts Building (R16)

## Joint Honours courses

A Joint Honours degree programme involves the study of two subjects. We offer around 150 different Joint Honours combinations.

Subject	Description	Time(s)	Venue
Joint Honours	Display and information desk	All day	Marquee, Chancellor's Court
Joint Honours	Talk – Admissions to Arts Disciplines/Joint Honours	10.30am	Large Lecture Theatre (120), 1st Floor, Arts Building (R16)



# Index of subject areas

This index should be used as a guide to general subject areas. A complete list of our programmes (including Major/Minor options, interdisciplinary courses and Joint Honours) can be found in our Undergraduate Prospectus. Staff will also be available on departmental display desks for further information on courses.

## A

Accounting and Finance	18
African Studies	20
American and Canadian Studies	20
Anthropology	20
Applied Golf Management Studies	18
Archaeology	20

## B

Biochemistry	14
Bioinformatics	14
Biological Sciences	14
Biology, Human	14
Biomedical Materials Science	16
Business	18

## C

Canadian Studies, American and	20
Chemical Engineering	12
Chemistry	12
Civil Engineering	12
Classical Literature and Civilisation	20
Computer Science	12,13
Culture, Society and Communications	21

## D

Dental Hygiene and Therapy	16
Dentistry	16
Drama and Theatre Arts	21

## E

Earth Sciences (see Geology)	15
Economics	18
Education	19
Electronic, Electrical and Computer Engineering	13
Engineering	12,13
English	21
English and History, Medieval	22
Environmental Science	15
European Politics, Society and Economics	19

## F

Finance	10
Film Studies, Modern Languages with	20
French Studies	21

## G

Geography	15
Geology	15
German Studies	21
Golf Management Studies, Applied	18

## H

Health Sciences	16,17
Historical Studies	21
History	21
History of Art	21
History, Ancient and Classics	20
History, Medieval English and	22
Human Biology	14
Humanities	20

## I

International Studies	19
Italian Studies	21

## J

Joint Honours courses	22
-----------------------	----

## L

Languages, Modern	21
Law	22

## M

Materials Engineering (Metallurgy and Materials)	13
Mathematics	13
Mechanical Engineering	13
Media, Culture and Society	19
Medical Science	16
Medicine	16
Medieval English and History	22
Modern Languages	21
Music	22

## N

Natural Sciences	15
Nursing	16,17

## O

Oriental languages	22
--------------------	----

## P

Philosophy	22
Physics and Astronomy	13
Physiotherapy	18
Political Science	19
Psychology	15

## R

Russian Studies	18
-----------------	----

## S

Social Policy	19
Social Sciences	19
Social Work	19
Sociology	19
Spanish	21
Sport and Exercise Sciences	15
Sport, Physical Education and Coaching Science	19
Sports Science and Sports and Materials Science (see Metallurgy and Materials)	13

## T

Theology	22
----------	----

## W

War Studies	22
-------------	----

# Refreshments

Location	Facilities	Opening times
Avanti, Ground Floor, University Centre (R23)	A 160-seat restaurant which provides a wide range of fast foods including breakfast, traditional fare, pizza, confectionery and drinks; also houses a deli bar and a salad bar	8.00am–4.00pm
Bar One, The Hub, Shackleton, Vale Village	Serving a range of cold drinks	10.00am–4.00pm
BBQ, Chancellor's Court (R24)	Serving a variety of hot BBQ food	12.00pm–3.00pm
BBQ, outside Bar One, The Hub Shackleton, Vale Village	Serving a variety of hot BBQ food	12.00pm–3.00pm
Bratby Bar, Ground Floor Staff House (R24)	Serving a limited selection of hot food, snacks and drinks	9.30am–3.00pm (food), 11.30am–3.00pm (bar)
Café Aroma, 1st Floor, Staff House (R24)	Parents' haven serving a selection of sandwiches and hot and cold drinks	10.00am–3.00pm
Café Go, 1st Floor, University Centre (R23)	A popular sandwich shop providing handmade deli sandwiches to order while you wait	8.30am–4.00pm
Cyber Go, Ground Floor, Arts Building (R16)	A popular coffee shop located in a new computer cluster, providing a large range of speciality coffees, sandwiches, and snacks	10.00am–3.00pm
Fusion, The Hub, Shackleton, Vale Village	Variety of hot and cold food available and hot and cold drinks	12.00pm–2.00pm
Go 2, Learning Resource Centre (R28)	This popular sandwich shop sells sandwiches, pastries, speciality coffees and a wide range of drinks and confectionery	9.30am–3.00pm
Go 3, Undercroft, Ground Floor, Biosciences Building (R27)	A coffee shop providing a large range of speciality coffees, sandwiches, snacks, confectionery and cold drinks	10.00am–3.00pm
Go Healthy, University Centre (R23)	Serving sandwiches, jacket potatoes and salad, plus smoothies and juices	9.00am–3.00pm
Med Café, Medical School (B1)	A fast-food restaurant selling a range of jacket potatoes, baguettes, sandwiches, pastries, and hot and cold drinks	9.00am–4.00pm
Physics, Poynting Building, 2nd Floor (R13)	A very popular coffee shop providing a large range of speciality coffees, sandwiches, confectionery and cakes	10.00am–3.00pm
Raising the Bar, Munrow Sports Centre (R25)	Serves a wide range of great value meals and drinks	10.00am–4.00pm
Rio's, The Hub Shackleton, Vale Village	Serving sandwiches at the Deli Bar, Paninis and hot and cold drinks	9.00am–3.00pm
Skool Café, School of Education (R19)	A coffee shop providing a range of speciality coffees, sandwiches, confectionery and cakes	9.30am–2.00pm

- R1 Law
- R2 Frankland Building
- R3 Hills Building  
Psychology
- R4 Aston Webb Earth Sciences
- R6 Aston Webb  
Reception Point  
Great Hall (Displays)  
Lost Persons/Property  
First Aid
- R13 Poynting Building  
Physics
- R14 Barber Institute of Fine Arts  
Art Gallery (Accommodation  
bus tours)
- R15 Watson Building  
Mathematics
- R16 Arts Building  
Humanities and  
Historical Studies
- R17 Ashley Building
- R19 Vaughan Jeffries  
Lecture Theatre  
(Talks) Education

- R21 Muirhead Tower
- R22 Main Library
- R23 University Centre  
Avon Lecture Theatre (Talks)  
Shops/Banks/Travel Agent/  
Insurance/Hair Salon/  
Optician
- R24 Staff House  
Refreshments
- R25 Munrow Sports Centre
- R26 Geography, Earth and  
Environmental Sciences
- R27 Biosciences
- R28 Learning Centre and  
Primary Care  
Clinical Sciences
- O1 Guild of Students  
(Students' Union)  
Debating Hall (Talks)  
Shops/Banks/Travel Agent
- O2 St Francis Hall  
Inter-denominational  
Chaplaincy
- O3 University House,  
Business School

- Y2 Haworth Building  
Chemistry
- Y3 Mechanical Engineering  
and Civil Engineering
- Y9 Computer Science
- Y11 Chemical Engineering
- Y14 Sport and Exercise  
Sciences
- B1 Medical School
- G3 European Research Institute
- G6 Metallurgy and Materials
- G8 Gisbert Kapp Building  
Electronic, Electrical and  
Computer Engineering
- G9 Health Sciences
- G12 Winterbourne Botanic  
Garden

Maps with a more detailed index can be found on the University's website at [www.location.bham.ac.uk](http://www.location.bham.ac.uk)



UNIVERSITY OF  
BIRMINGHAM

Edgbaston, Birmingham,  
B15 2TT, United Kingdom

[www.bham.ac.uk](http://www.bham.ac.uk)



When you have finished with  
this brochure please recycle it



# Edgbaston campus map

(Fold out the inside page to view the full map and key)



## key

- |  |                       |  |   |
|--|-----------------------|--|---|
|  | Information point     |  | Retail                                    |
|  | Level access entrance |  | Toilets                                   |
|  | Steps                 |  | ATM                                       |
|  | Public car park       |  | Canal bridge                              |
|  | Bus stops             |  | Marquee (Campus tours)                    |
|  | Library               |  | Accommodation bus stop                    |
|  | Museum                |  | Shuttle bus to Park and Ride              |
|  | Sport facilities      |  | Average walk time from Chancellor's Court |
|  | First aid             |  |   |
|  | Food and drink        |  |   |

