



Chair in Philosophical Theology

The University

With more than 7,000 staff and 30,000 students, we were the first – and are now one of the largest – civic universities in the UK. Our heritage as the original 'redbrick', is combined with one of the most compelling and ambitious agendas in higher education. Quite simply, at Birmingham we make things happen. Home to world-class researchers – whose work in everything from developing next generation engine technologies to harnessing quantum technology to solve everyday problems makes a real difference to people's lives – we provide innovative solutions to big problems. We think, recruit and compete worldwide.

Our naming as *The Times* and *The Sunday Times* University of the Year 2013–14 recognised a transformative time in our history characterised by our bold, ambitious strategy and innovative approach to the challenges facing the sector. The University is a pioneer in sector-leading initiatives, including our 'Birmingham Fellows' programme, which has so far seen around 70 of the world's best early career academics join us, and the much-emulated unconditional offers strategy for exceptional students. We have a clear vision for the future, ambitious leadership, world-leading academic strengths and a secure financial base. With an annual turnover of more than £520 million, we use our financial strength to invest in the intellectual and physical future of the University. Judicious planning has enabled us to embark on a £500 million capital development programme. Over the past three years, some £250 million has been invested in the Birmingham campus including a new library, a major sports centre, outstanding new student accommodation and a state-of-the-art student services hub. We have been encouraging bold, independent thinking and providing exceptional academic programmes for more than a century, and the new University of Birmingham School will continue this tradition; providing an outstanding academic education for the city's young people and serving as a centre of teacher education in the region.

Birmingham is a leading member of the Russell Group and a founder member of the Universitas 21 global network of research universities (www.universitas21.com). Our Vice-Chancellor is the current Chair of both groups.



Chair in Philosophical Theology

Exceptional Research

The University is one of the UK's most successful institutions in terms of attracting research funding. We have a portfolio of over 2,600 live projects with an award value to the University of £594 million.

Our research record speaks for itself. More than 80 per cent of all research carried out at Birmingham is rated as internationally excellent or world-leading, according to the latest UK-wide research quality survey (REF 2014). The results also show that 87 per cent of our research activity has a global impact, confirming our position among the world's top universities for research in a broad range of areas, from History and Education to Chemical Engineering and Psychology.

Long established as a pioneer in the field of medicine, Birmingham scientists were the brains behind the first heart pacemaker, the use of aspirin and the synthesis of Vitamin C. 'Great minds, in the right location' sums up our unique combination of cutting-edge laboratory work, clinical expertise and first-class surgical facilities all housed on one vast life sciences campus. The Institute of Translational Medicine, which is scheduled to open later this year, will build on Birmingham's excellent track record in clinical trials and help to progress the very latest scientific research findings from the University into enhanced treatments for patients across a range of major health issues including cancer and liver disease. Bringing together the University, the University Hospitals Birmingham NHS Foundation Trust, and Birmingham Children's Hospital, it will increase capacity and enable more patients to be co-located alongside clinicians and researchers. It will also make it easier for firms to engage with clinicians and academics, bringing additional investment into the city. This vision is reflected in Birmingham's ambitious project to create a four hectare science park specifically for the life sciences adjacent to the University and Hospital to attract cutting edge health and pharmaceutical research firms into the city, driving economic growth alongside medical and scientific innovation.

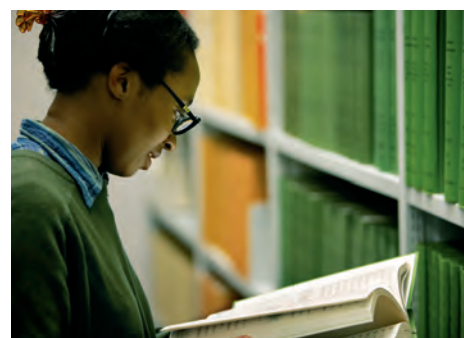
These investments reinforce the University's position today as a world leader in, for example, the development of new treatments for cancer, heart, and liver disease, as well as innovative transplant technologies and new drugs to combat antibiotic resistance.

This strength in life sciences is reflected throughout our College of Life and Environmental Sciences which is home to one of the best stand-alone Psychology schools in the country as well as one of the top three centres for research into Sport, Exercise and Rehabilitation Science. Supported by a major gift from a philanthropist, the University is developing a unique institute for forest research which will investigate the effect of rapid climate change on tree canopy development and pathogens.

The University's arts and humanities researchers are among the very best in the UK, highlighting our world-class research programme. Philosophy, History, Classics, Theology and Religion, and West African Studies are amongst the top ranked departments in the country and recognised for bringing significant benefits to society.

In the Physical Sciences we boast outstanding academic and research credentials, including in Chemical Engineering, in which we were recognised with a Queen's Anniversary Prize in the Jubilee year, and in Physics, where we have just received investment of £80 million to develop Quantum Technologies. Our substantive links with industry include receiving a £60 million investment from Rolls-Royce and the Higher Education Funding Council for England (HEFCE) for the world-leading High Temperature Research Centre.

In the Social Sciences we have developed a broad range of initiatives, focused on enhancing, supporting and developing public sector services across the city and nationally. The Public Service Academy brings together the University's teaching, research, consultancy and knowledge transfer expertise in public services. Working with a range of key public service partners, including Birmingham City Council, our work is focused on key themes including cohesion, health and wellbeing and localisation. Our Health Services Management Centre provides a combination of research, teaching, professional development and consultancy to health and social care agencies and has established a unique reputation as a 'critical friend' of the healthcare community. The Institute of Local Government Studies is the leading UK centre for the study of local public service management, policy and governance. With more than 40 years of experience working within local government and the public sector, it shapes the very latest thinking for public servants.



Chair in Philosophical Theology

Exceptional Research continued...

Our research helps to shape the national political agenda too. The ground-breaking Birmingham Policy Commissions bring together key figures from the public, private and third sectors with our academics to generate new thinking on contemporary issues of global, national and civic concern. Commissions to date have included reports on the shape and nature of local public services in a 'big society', the future of nuclear energy in the UK and the security impact of drones.

Outstanding Students

At Birmingham we encourage bold, independent thinking and provide exceptional academic programmes that stretch and challenge. We understand that every student is an individual with a unique learning style and have invested in the latest learning facilities and technologies. As a result we attract students with the finest academic credentials and year on year applications for our undergraduate places are growing rapidly and more impressively than they are nationally or for comparable universities. This year we will welcome approximately 8,000 undergraduate and postgraduate students. We are committed to delivering a first-class experience for our students in every aspect of their university life. This is also why the University was ranked 11th in *The Times Higher Education Student Experience Survey 2013* and 17th out of 123 UK universities in *The Complete University Guide 2015* and in *The Guardian University Guide 2015*. These latest league table results further strengthen Birmingham's position as a Top 20 university and reflect our recent performance in other highly-regarded league tables, such as the *The Times* and *The Sunday Times Good University Guide 2014*, which ranked the University in 16th place overall.

Global Outlook

Rated 64th in the *QS World University Rankings 2014–15*, the University has a significant international presence. The breadth of our research in China, and particularly in the Guangzhou region, is testament to the success of our collaboration with the local government and universities there. In Brazil, the Universities of Birmingham and Nottingham are working together in a unique collaboration to develop a network of strategic partnerships with Brazilian universities, as well as the oil and gas industry. In North America, the University has a major collaboration with the University of Illinois at Urbana-Champaign underpinned by a flourishing network of faculty-faculty relationships. Our partnerships in India continue to develop and have been strengthened by our Chancellor, Indian-born entrepreneur and Cross-Bench Peer Lord Bilimoria of Chelsea. We also have partnership agreements with many of the world's leading universities, an office in New Delhi and a presence in Brussels. More information about our strategic global engagements and international research focus can be found on our website (www.birmingham.ac.uk/International/global-engagement/index.aspx).

Cultural Assets

The University's many cultural assets take in the Shakespeare Institute at Stratford-upon-Avon, which has direct working links with the Royal Shakespeare Company; the Ironbridge Institute in Shropshire, and the Barber Institute of Fine Arts – our own art gallery that houses works by many of the greatest artists in the western tradition. The Edgbaston campus also includes Winterbourne House and Garden, a unique Edwardian heritage attraction that is home to more than 6,000 plant species from around the world. Our cultural profile was significantly enhanced with the opening of the Bramall Music Building in 2013. This houses the Elgar Concert Hall, named after our first Professor of Music, Sir Edward Elgar, and is a striking venue that complements our global reputation in music, attracting some of the most talented musicians from across the world to study here.

Sport

Sport is integral to life at Birmingham and we are ranked third in the UK for the quality of student sport. Our new sports development, also due to open early next year, will include the city of Birmingham's first 50-metre swimming pool – an asset not only for our students and staff but for the wider community.



Chair in Philosophical Theology

Future Investment

Our plans for the future are underpinned by long-established financial probity. We contribute £1 billion a year to our region's economy. Our surpluses and substantial philanthropic support are re-invested into the intellectual and physical fabric of the institution, enabling us to plan with confidence for the future and to continue to invest in the facilities and services that are required for high-quality research, and an outstanding student learning experience.

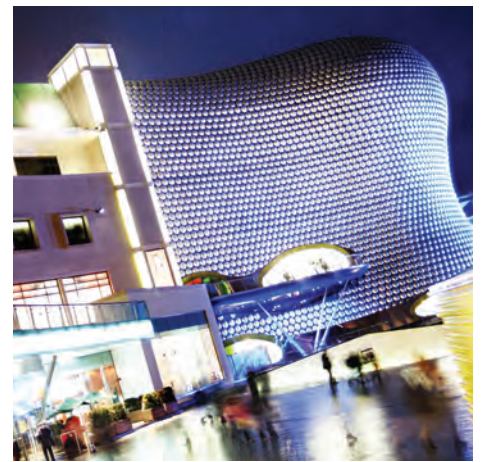
Led by our Vice-Chancellor, Professor Sir David Eastwood, the University is structured for swift decision-making, enabling us to capitalise on our academic range and financial strength as well as the opportunities that emerge in the fast-changing global HE environment.

The City of Birmingham

Birmingham is the UK's second city and a major European centre as well as being the only place in the UK listed in the *Rough Guide's* top 10 places in the world to visit in 2015. It is a city of historical interest and contemporary vision and has a rich and diverse community that creates a vibrant, multicultural and exciting place to live and work. In the recent *The Sunday Times/Zoopla* report '*Best Places to live in Britain*', three areas of Birmingham, Harborne, the Jewellery Quarter and Moseley all made the top 50 best places to live in Britain with Moseley being voted the overall winner.

Birmingham is home to the internationally renowned Birmingham Royal Ballet and one of the world's greatest concert venues, the Symphony Hall. The City Museum and Art Gallery houses the world's finest collection of Pre-Raphaelite paintings, alongside a major collection of Old Masters, Modern and Contemporary pictures, while the iconic Bullring is one of the largest dedicated shopping facilities in Europe. Sports and recreation are also well served, the city offers international Test cricket, top-flight football, international championship golf and top-class rugby. As a multicultural city, Birmingham is also renowned for the breadth of its cuisine and has more Michelin starred restaurants than any other English city outside London.

Birmingham is within an hour's drive of Stratford-upon-Avon and the Cotswolds. From Birmingham International Airport, more than 50 different airlines operate scheduled services to 100 destinations worldwide. The University has its own dedicated railway station, while 50 million passengers a year use Birmingham New Street Station, which will be at the centre of the proposed high-speed rail network. London is 80 minutes away by shuttle service, with trains every 20 minutes.



Chair in Philosophical Theology

College of Arts and Law

With over 5,000 students and in excess of 400 staff, the College of Arts and Law encompasses an extensive range of subject areas from philosophy to drama, and from history to music, as well as world-renowned research centres such as the Shakespeare and Ironbridge Institutes.

The College's results in the UK Research Excellence Framework (REF) of 2014 show its research to be amongst the best in the world. History was rated 1st of all such departments in the UK, Philosophy 2nd, and Theology 2nd (by GPA of output profile). Overall we have one of the largest and best concentrations of Humanities researchers in the UK.

Arts and Law consists of the following five Schools, making it the second largest College on campus in terms of student numbers:

- Birmingham Law School
- English, Drama and American and Canadian Studies
- History and Cultures
- Languages, Cultures, Art History and Music
- Philosophy, Theology and Religion

Each School offers a varied suite of undergraduate and postgraduate programmes and a vibrant and supportive environment that allows research to flourish. The College also possesses excellent facilities including several libraries and collections, a number of dedicated computer clusters and a cybercafe.

Located centrally on the University campus is the renowned Barber Institute of Fine Arts. The newly opened Bramall Music Building has a 450-seat auditorium and is the most flexible performance space to be found at a UK university – suitable for performances from solo voice, early music, to a full symphony orchestra. When not used for music, it is a high profile location for drama and dance performance and for prestigious lectures.

The diversity of the College's activities is one of its biggest strengths. Its academic reach spans established groups with rich heritage (such as its 80-year-old Law School and a Music Department whose first Professor was Edward Elgar) through to emerging strengths and new interdisciplinary areas of study (such as Global Ethics, Analytic Philosophy and Digital Humanities).

Further information about the College, including additional details about its departments, research institutes and facilities, can be found at www.about.bham.ac.uk/colleges/artslaw

The School of Philosophy, Theology and Religion

The School of Philosophy, Theology and Religion is one of the strongest centres of research in the University and in the country. Both its Departments ranked second in the UK in the 2014 Research Excellence Framework (using the Grade Point Average as the measure). It offers a wide range of opportunities for forward-thinking postgraduate study and research and is home to a friendly and ambitious community of staff and students, committed to independence in research and learning. Nor is it insular: its philosophers and theologians work with other disciplines in the University and beyond, and, closer to home, are concerned to grow areas of common interest, notably philosophical theology. Its undergraduate programmes too take advantage of our research strengths (single honours BA programmes are offered in: Philosophy; Theology and Religion; Philosophy, Religion and Ethics; and Politics, Religion and Philosophy. There are further joint honours programmes.). The suite of postgraduate programmes, including several by distance learning, reaches a variety of strong markets; and we have one of the largest postgraduate research clusters in the UK.



Chair in Philosophical Theology

The School of Philosophy, Theology and Religion continued...

Over and above the academic and intellectual strength of our disciplines, we are particularly proud of our growing impact, in both departments, on society and on policy-making.

There are presently approximately 40 members of academic staff in the School. The administration and management of the School is led by the Head of School (Professor Ken Dowden). He is supported by Head of Research (Dr Yujin Nagasawa) and Director of Education (Dr Isabel Wollaston). Dr Nikk Effingham is the Head of the Department of Philosophy, and Dr David Cheetham Head of the Department of Theology and Religion.

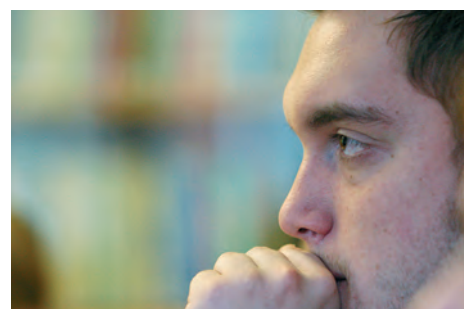
The Department of Philosophy

The Department of Philosophy, during a period of substantial investment by the University, has attracted some of the best scholars worldwide to its staff and already enjoys a strong international reputation as a centre of excellence for research in analytic philosophy, especially in metaphysics and philosophy of language, mind and psychology, in philosophy of religion, and in ethics and ethical theory. This dynamic and fast-growing department now ranks second in the country in the recent Research Excellence Framework assessment and has succeeded in newly establishing a creditable place in the Philosophical Gourmet Report.

A wide range of central and important areas for rigorous research characterises the Department, the complex overlaps of whose interests is naturally rather belied by the following. Professor Rumfitt is well known for his work on fundamental questions of logic and on the philosophy of mathematics, Professor Sturgeon for his researches into epistemological questions. Work on the philosophy of mind, stretching as far as neuroscience, psychology and mental health is conducted by Dr Spener, Professor Bortolotti, and Dr Pickard. A strong interest in ethics and metaethics is displayed in different ways by many members of the Department, notably Dr Suikkanen, Dr Law, and Dr Silk, as well as by those particularly engaged in Global Ethics (below). Philosophy of religion is central to Professor Nagasawa and forms part of the portfolio of Dr Effingham (together with metaphysics). On top of all this, there are two further dimensions. First, the University has invested in three Birmingham Research Fellows, bringing the best of young scholars to enrich our environment. Dr Williams contributes to ethics and issues raised by global conflicts, and Dr Jones to numerous issues in metaphysics, language and logic, while Dr Wilson is at home in physics and metaphysics. Secondly, we are proud to have on our team seven distinguished international scholars (Professors Boghossian, Field, Fine, Jagger, Neale, Siegel and Wedgwood), whose expertise makes a special contribution to our research students, the research of our staff, and our research events.

The Centre for the Study of Global Ethics is an organic and indivisible part of the Department of Philosophy and of its current expansion. The Centre was set up in 2001 to address the key ethical issues of our time and was the first of its kind in the UK. While based in the Department of Philosophy, the Centre is multidisciplinary by both conviction and methodology and members are drawn from disciplines across the University. Its starting point is that current global challenges cannot be resolved solely within one nation state, one academic discipline, one political outlook, one belief-system or one evaluative framework. The Centre's work focuses on research, impact and teaching.

The research of staff in Global Ethics, applying the same rigour as all research in the Department of Philosophy, produces world-leading publications across its four principal themes: justice and development (led by Dr Scott Wisor); environment and health (led by Professor Lisa Bortolotti); gender justice (led by Dr Sheelagh McGuinness); and conflict and security (led by Dr Jeremy Williams). Emphasis is placed on excellence in publications, and at the same time collaborative work and research funding is central to the work of the Centre, whose staff currently hold grants from major funders (AHRC, EU, ESRC and Leverhulme). The Centre goes beyond the production of philosophically and academically excellent work, and aims to affect real world policy and practice. To this end the Centre's staff collaborate and habitually work with practitioners, policy makers, and activists. Global Ethics research provided powerful 'impact case studies' for the Department of Philosophy in the recent Research Excellence Framework assessment, with equally powerful results: for impact Philosophy came joint top in the UK with both of its case studies deemed 'outstanding' and rated 4*.



Chair in Philosophical Theology

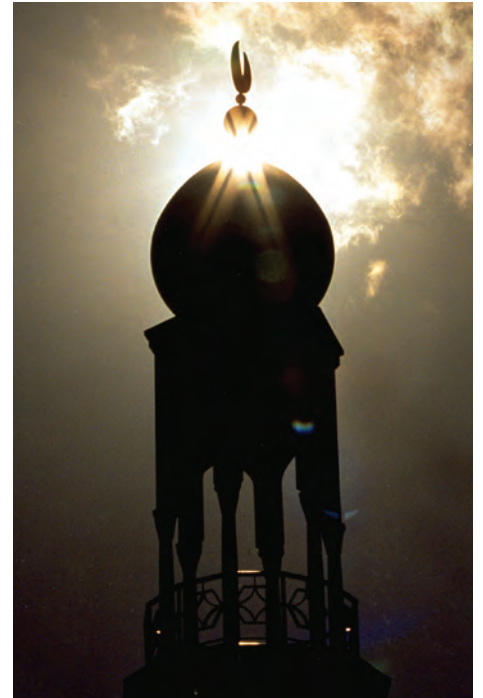
The Department of Theology and Religion

The Department of Theology and Religion plays a world-leading role in areas of research such as textual scholarship; inter-religious relations; intercultural theology; Pentecostal/Charismatic Studies. It has extensive formal and informal links with academic institutions on five continents. Various research projects, centres and postgraduate programmes operate within these units, including the Institute for Textual Scholarship and Electronic Editing, the Centre for Pentecostal and Charismatic Studies, and the John Hick Centre for the Philosophy of Religion. It too is now entering on a phase of expansion and renewal, following the confirmation of its inherent excellence in the Research Excellence Framework 2014.

As part of its strategy for renewal, the Department has adopted two particular directions for enhancement and development.

One direction is the development of the newly established Edward Cadbury Centre for the Public Understanding of Religion, which we have already underpinned with two excellent appointments. This Centre seeks to enhance the public understanding of religion regionally, nationally and internationally through distinctive, strategic and engaged interdisciplinary research. Its aim is to deliver innovative, interdisciplinary, impact-driven and internationally-excellent research to explore the significance of religious belief and practice for public and professional life, working with faith communities and policy makers to develop informed agendas for social transformation, and it seeks to fulfil this goal by undertaking distinctive, specific and focused research, publication and engagement activity to support its core agenda, and inspiring, partnering in and leading the development of similar collaborative work both institutionally and more widely; developing and modelling processes for effective analysis and evaluation and research co-production which will enable and empower faith communities to reflect critically upon their beliefs and practices and expound and interpret them to a wider public; and creating and distributing resources, and organising public lectures, educational programmes, and other strategic events and activities that will enhance the understanding of religion and religious affairs, for education, policy and professional development and commercial contexts. Our current negotiations with interested parties beyond academia are demonstrating to us what a chord this initiative is striking.

The other direction is to grow Philosophical Theology. It is an opportune moment to grow this rigorous academic area: in the discipline it has never attracted greater interest than now and this is reflected in the interests of postgraduate researchers. It is also an area that allows us to exploit the strengths of our sister department, Philosophy, both for its analytic strengths and for the interests of several of its staff in the Philosophy of Religion, most obviously exemplified by the current collaborations of Dr Cheetham (Theology and Religion) and Professor Nagasawa (Philosophy).



Chair in Philosophical Theology

Background

As part of a sustained phase of investment by the College of Arts and Law at the University of Birmingham, we are currently appointing to three wholly new Chairs in key areas in the School of Philosophy, Theology and Religion. One of these is the Chair in Philosophical Theology in the Department of Theology and Religion (the others are: a Chair of Philosophy in association with the new Centre for Norms and Nature; and, also in the Department of Philosophy, a Chair in Global Ethics).

The Department of Theology and Religion (hereafter, 'the Department') is well known for its work in many areas and has come a very impressive second in REF 2014 (on grade point average, after only Durham). This striking success, and a full internal review of the Department, have confirmed the view that now is the time to invest in Theology and Religion and to renew its strengths and portfolio. In doing just that, we have identified two principal areas to act as the immediate focus: one of these is the public face of religion and the world of policy and society, for which we have designed the new Edward Cadbury Centre for the Public Understanding of Religion. The other is philosophical theology, hence this post.

We regard philosophical theology as an area for the development of rigorous scholarship, and one in which some of the most outstanding work in theology currently is conducted. It attracts researchers at every level and we find that the postgraduate market is buoyant. Naturally, it informs other areas of theology and religion and we expect the successful candidate to be interested in those areas and perhaps in a position to make some contribution to them. In addition to this, we have in recent years been growing an enviable department of Philosophy and there are clear synergies possible and available between the two departments over and above existing collaborations, which are substantial. Everything points to this post assuming a key role in the development of the School and of the Department towards an excellence that will be demonstrated by a consistent and powerful result in REF 2020 (or equivalent).

Finally, it should be underlined that the Chair in Philosophical Theology is one of a number of appointments in 2014-2017 that enhance and will enhance the quality and impact of Theology and Religion at Birmingham.

Job outline

- Full-time
- Duration of post – permanent
- Post is open to internal/external candidates
- Salary – Competitive package for an outstanding candidate
- Informal Enquiries – Dr David Cheetham (d.cheetham@bham.ac.uk)

The appointment

The appointee will be expected to:

- build on existing achievements and further enhance the research profile of the Department, working with current staff to forge a recognisable Birmingham identity;
- increase postgraduate recruitment in Philosophical Theology, at both PGT and doctoral level;
- contribute to teaching at undergraduate and postgraduate level, playing a major role in devising new initiatives in programme development;
- play a leadership role in developing collaborative applications for research funding;
- play a full part in the life of the Department, the School and the University.



Chair in Philosophical Theology

Person specification

The successful candidate will

1. display an established profile in Philosophical Theology (in any area) that is recognised as world-leading;
2. display a track record of world-leading publications and present plans for future publications commensurate with submission to the next REF (or equivalent);
3. display the vision and enthusiasm to develop research in Philosophical Theology in the School;
4. have experience of gaining and managing research funding, and of identifying and exploiting different sources of income;
5. evidence effectiveness and flair in teaching at all levels (UG and PG, including Distance Learning);
6. present an excellent track record of attracting and supervising doctoral researchers;
7. be ready and willing to work with colleagues from other disciplines, inside and outside the University;
8. display a range of generic skills to support and enhance research and teaching activity, including excellent skills in organisation, communication and person-management;
9. display the ability to think strategically, to be imaginative and to anticipate trends and opportunities;
10. understand the administrative requirements of higher education.



Main responsibilities

The successful applicant will need to:

- contribute to the research culture of the Department and to its current upward trajectory in terms of world-leading research;
- build the national and international profile in particular of philosophical theology at Birmingham;
- create excellent personal publications, suitable for submission as world-leading in the next REF (or equivalent);
- apply for and attract significant research funding, both on an individual and a collaborative basis;
- enhance the activity and capacity of the Department by attracting research visitors and organising conferences, colloquia, and workshops;
- collaborate with other colleagues in the Department in the development of its public-facing profile;
- engage with members of the Department of Philosophy to further research into the interface between religion and philosophy and identify opportunities for teaching development at all levels;
- contribute to the general administration of the Department, the School and the College of Arts and Law.

Staff

- develop and support junior members of staff, providing informal support and mentoring, for example, around submitting high quality peer-review publications and when leading on high profile research bids;
- when appropriate, advise on staffing needs and on the appointment of new staff.

Students

- provide high-quality supervision, both in person and on distance learning programmes;
- maximise recruitment, retention and employability of postgraduates;
- deliver well-designed and engaging programmes of teaching and learning at all levels (UG, PGT and PGR), in traditional and distance-learning formats;
- review and design/redesign relevant teaching programmes within the School, ensuring these meet the declared standards of the University and external bodies.

How to apply

Applicants are invited to submit their application online to us, using www.hr.bham.ac.uk/jobs

