

The College

In August 2024, the College was renamed to become the College of Medicine and Health, reflecting our combined work, particularly in health. This encompasses our deep connections with the NHS, as well as our research in Global Health, Applied Health, Public Health, Health inequalities and Health Economics. This also highlights our education across health specialities: pharmacy, nursing, midwifery, and dentistry.



College overview and structure

The College of Medicine and Health (CMH) is the largest of the University's five Colleges with over 1,700 members of staff ensuring teaching and research excellence across a wide range of pre-clinical and clinical disciplines.

The College structure is aligned under three schools (Principal Academic Units): the School of Medical Sciences, the School of Health Sciences and the School of Infection, Inflammation and Immunology. Within these three schools sit fifteen different departments, including our clinical trials units:

School of Medical Sciences:

- Cancer and Genomic Sciences
- Cardiovascular Sciences
- Metabolism and Systems Science
- Birmingham Medical School
- Cancer Research UK Clinical Trials Unit (CRCTU)

School of Health Sciences:

- Pharmacy
- Dentistry
- Nursing and Midwifery
- Applied Health Sciences
- Birmingham Clinical Trials Unit (BCTU)

School of Infection, Inflammation and Immunology:

- Immunology and Immunotherapy
- Inflammation and Ageing
- Microbes, Infections and Microbiomes
- Biomedical Sciences
- Clinical Immunology Service

Our departments are in identified areas of high-performing research and teaching excellence, each with an ambitious strategy and empowered leadership. We draw together outstanding academic, clinical, and professional services staff around coherent and highly collaborative themes.

Professional services

A diverse range of committed and high-performing professional services staff, managed through integrated College-wide teams, underpin, and provide support to the establishment, development, and delivery of all aspects of the College's activity. They support academic staff and students and provide core functions and support services in addition to delivering specialist technical services.

The model of central management with localised focus and delivery provides flexible, high-quality support according to academic need. The teams operate in close and effective partnership with colleagues across campus and in the NHS.

College location

The principal base of the College is part of the main campus of the University in Edgbaston, one of the largest single-site biomedical campuses in the UK, co-located with Queen Elizabeth Hospital Birmingham, Birmingham Women's Hospital, and the Barberry Hospital. There are also a number of other key buildings both on and off-campus, including [the new £225million Birmingham Health Innovation Campus](#) development on-site with Bruntwood SciTech, as well as the Birmingham Dental Hospital and School of Dentistry at Pebble Mill, just a mile from the central campus.



Research

With over 900 academic staff and around £80 million new research funding per year, CMH represents a major international centre for biomedical and health research.

Our goal is to improve human health by tackling global healthcare problems through excellence in basic, clinical, applied and implementation science. We are proud to deliver tangible real-life benefits in the fight against acute and chronic disease. We take pride in a truly translational pipeline, delivering cutting edge clinical trials and patient studies, underpinned by cell and molecular biology research on both model organisms and humans.

Our research is supported by peer-reviewed multi-million-pound funding from a broad range of funders, including UK Research and Innovation, medical research charities such as Wellcome, Cancer Research UK, Blood Cancer UK, Versus Arthritis and the British Heart Foundation as well as the National Institute for Health and Care Research and the European Union.

This is complemented by strategically important support from other government bodies (such as

Birmingham City Council, West Midlands Combined Authority, the Department of Health & Social Care, and Office for Life Sciences) and increasing funding from industrial partners including large pharmaceutical companies and SMEs.

The Latest Higher Education Statistics Agency data shows that the College of Medicine and Health comes in 6th, in terms of total UK Government research income.

The Research Excellence Framework (REF) 2021 confirmed our position among the UK's top research universities:

- Our Clinical Medicine (UoA 1) research saw significant growth, as demonstrated by our rise from 25th in REF 2014 to joint 11th (GPA) with a research power ranking of 6th
- Our Public Health, Health Services and Primary Care (UoA 2) research is in the UK's top 5 (GPA) with a research power ranking of 12th
- 100% of our impact case studies in UoA 2 were deemed to be 4* – outstanding in terms of reach and significance.
- We are ranked in the UK's top 20 (GPA) institutions for Allied Health Professions, Dentistry, Nursing and Pharmacy (UoA 3)

With an average field weighted citation impact of 2.58 for medical and dental sciences our research is truly world-leading and over 20% of our publications appear in the top 10% cited papers worldwide, including The Lancet, British Medical Journal (BMJ), and Nature. Our collaborative ethos and the multi- and inter-disciplinary nature of our research are highlighted by the fact that nearly 90% of our publications are developed in collaboration with national and international partners. We are highly ranked in the world's top Universities for all our subject areas, including 69th (top 10%) for Medicine and 22nd for Dentistry.

Our departments

Our departments are responsible for driving the further development and delivery of priority themes identified in the wider University Strategic Framework 2030. They are championing interdisciplinary collaboration across the University's Colleges, in partnership with our regional NHS Trusts and with a host of UK and global collaborators. Each department contributes to our translational pipeline, supporting fundamental research excellence through to clinical and applied health programmes.

This strategy ensures that our research delivers real impact in health and wealth generation and that our educational programmes are informed by our research strengths. Co-location and core focal points for each of the departments ensure cohesion, while at the same time promoting cross-Institute working and collaboration.

This is further enabled through access to key College and/or cross-campus-managed facilities and resources and the provision of high-quality professional services support including core academic, technical and specialist administration in support of teaching and research delivery.

School of Medical Sciences:

Overview

The School of Medical Sciences brings together world-leading clinical and discovery researchers and educators, alongside cutting-edge, early phase trial methodologies and systems modelling, to transform patient outcomes from some of the most important health challenges facing our population. This includes cancer, cardiovascular disease, diseases of metabolism and women's health and fertility. The School includes one of the UK's largest Medical Schools, supporting the

NHS through exceptional undergraduate and postgraduate education, delivering the future healthcare workforce.

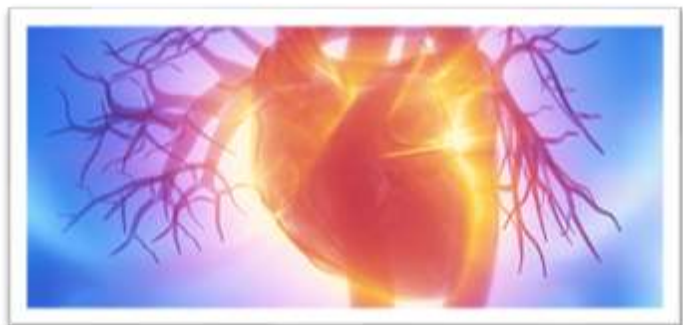
Cancer and Genomic Sciences

The department of Cancer and Genomic Sciences represents our major academic strengths in discovery and translational science in both adult and paediatric cancers and rare neurodevelopmental and metabolic diseases, with a particular focus on gene regulation, genetics, DNA replication and repair, and data sciences.

The department provides leadership for the [Birmingham Centre for Genome Biology](#), [Centre for Rare Disease Studies](#), [Centre for Health Data Science](#), [Genomics Birmingham](#), and the [Bladder Cancer Research Centre](#), and is closely linked with the [Cancer Research UK Clinical Trials Unit](#) and an [NIHR-CRUK Experimental Cancer Medicine Centre \(ECMC\)](#).

Cardiovascular Sciences

Cardiovascular science is a pivotal area of modern medicine, and our department delivers high impact internationally recognised research across the field. Research is divided into four themes: Cardiac Diseases, Thrombosis and Haemostasis, Vascular Biology and Inflammation, and Imaging and Technology.



Our outstanding infrastructure allows us to image molecules by super-resolution microscopy through to cardiovascular circulation in man. The facilities include state of the art intravital suites to enable live imaging. Unique NHS partnerships across 9 regional hospitals, brings cutting edge science into clinical care. Our expertise in artificial intelligence and data driven trials using routinely collected health data has led to innovation in trial delivery, improving their inclusivity and cost as exemplified by the world leading Dare2 Think programme.

Metabolism and Systems Science

Metabolism and Systems Science offers a highly multidisciplinary collaborative environment that combines leading excellence in metabolism, endocrinology, reproductive medicine, and translational brain research with world class expertise in metabolome analysis, receptor signalling and pharmacology, live cell imaging, model-based and human in vivo physiology, and systems science approaches.



As a critical hub for interdisciplinary research, the department drives strategic leadership for the University of Birmingham Metabolomics Core, which comprises a unique cluster of capacity and expertise for metabolome analysis, delivered by the [Steroid Metabolome Analysis Core](#), the [Metabolic Tracer Analysis Core](#) and the [Henry Wellcome Biomedical Nuclear Magnetic Resonance Facility](#). Researchers also give a key contribution to the [Centre of Membrane Proteins and Receptors \(COMPARE\)](#), a unique multidisciplinary research centre aimed at investigating the mechanisms of cell communication in physiology and disease to develop innovative therapies for common conditions like cardiovascular disease, diabetes or cancer. These efforts are supported by state-of-the-art facilities for advanced microscopy and image analysis provided by the [COMPARE Advanced Imaging Facility](#).

Included in the department is the [Centre for Endocrinology, Diabetes and Metabolism \(CEDAM\)](#), an inclusive network of clinicians and researchers that facilitates an ageless approach to clinical and translational research in endocrine and metabolic disease. The [Tommy's National Centre for Miscarriage Research](#), the [WHO Collaborating Centre for Global Women's Health](#) and the [Centre for Human Reproductive Science](#) deliver world-leading research in maternal health, miscarriage prevention and infertility. The discovery, translational and clinical science is supported by cutting-edge mathematical and statistical modelling, theoretical physics, machine learning, data science, and image analysis, delivered through the [Centre for Systems Modelling and Quantitative Biomedicine](#).

Cancer Research UK Clinical Trials Unit (CRTU)

Our internationally leading [Cancer Research UK Clinical Trials Unit \(CRCTU\)](#), delivers clinical trial innovation for children, young people and adults with cancer, and is the national lead for paediatric cancer trials. CRCTU supports early phase trials for Birmingham's [NIHR Biomedical Research Centre](#), including cellular therapies, medical devices, diagnostics and biomarkers in non-cancer specialities. This has included identifying the earliest signals of inflammatory response in rheumatological disorders using novel biomarkers and coordinating and completing early phase, multi-arm, multi-centre trials during COVID-19.

Birmingham Medical School:

The Birmingham Medical School supports over 2000 undergraduates taking our MBChB Medicine & Surgery Programme, making our programme one of the largest in the United Kingdom. We also have over 170 Postgraduate students, who are studying one of our 5 medicine, education and medicine-associated professions focussed programmes. We host students studying towards qualifications in Physician Associate Studies, Anaesthesia Associate Studies, Healthcare Simulation, Clinical Neuropsychiatry, and Education for Health Professions. Our staff and students have immeasurably benefitted human health through their innovations in medical and healthcare practice and research. Our students learn from leading role models in their respective fields of research and clinical practice. both Medicine and Physician Associate studies students benefit from their early engagement with outstanding clinical placements, and our students become the model professionals required for the future of medicine and healthcare around the world. Our staff shape the field of science and medical education throughout the world with their expertise and passion for enabling students to excel in their chosen field.

School of Health Sciences:

The School of Health Sciences brings together Nursing and Midwifery, Pharmacy, Dentistry, and Applied Health Sciences with its closely linked Birmingham Clinical Trials Unit.

Applied Health Sciences

The department of Applied Health Sciences is a vibrant, inclusive, and nurturing institute which aims to tackle global health challenges, prevent disease, and improve healthcare through research, methodological innovations, and the provision of distinctive education. We are committed to a positive culture of collegiality and aim at providing an environment that values intellectual



openness and the contribution of every member of our diverse workforce.

The department has 7 multi-disciplinary and cross-cutting teams focussing on the following themes:

- [Global Health and Global Surgery](#)
- [Health Services, Primary care and Clinical Medicine](#)
- [Public Health and Women's Health](#)
- [Biostatistics, Evidence Synthesis, Test Evaluation and prediction models \(Besteam\)](#)
- [Health informatics and multimorbidity](#)
- [Health Economics Unit](#)
- [Person Centred Research](#)

Included in the department are the Centre for Primary Care Improvement which is an inclusive network of General Practitioners and researchers who aim to improve primary care across a number of domains including clinical effectiveness and patient and staff experience. Three methodologically focussed Centres are: The Centre for the Economics of Obesity with a key focus to generate capacity in new researchers working closely with local authorities, public representatives, and local and regional stakeholders generating economic evidence to help reduce obesity; The Centre for Patient Reported Outcome Research which seeks to optimize the use of PROs in clinical trials and routine care, to improve service delivery, enhance patient care and outcomes and ensure that the patient perspective is at the heart of health research and NHS decision-making and the Centre for Health Data Science which includes clinicians and academics that cover expertise in digital epidemiology, clinical bioinformatics, learning health systems, and artificial intelligence for health.

The quality of the department's research was ranked 5th out of 33 British institutions in the most recent REF results, with 65% of our work judged to be world leading (4*) and 32% as internationally excellent (3*). 100% of our submissions on research impact was rated as world leading. Our average annual research awards are approximately £22 million.

Birmingham Clinical Trials Unit (BCTU)

BCTU is a renowned clinical trials unit, covering every disease and condition across the life course with a particular focus on late phase trials. For over 25 years, we have been providing clinicians with scientific, technical and information technology expertise to support every stage of their innovative research and influence medical treatment. Our work on disease prevention, treatment and control leads to clinical practices that change lives both nationally and globally.

Dentistry

Dentistry is located in the Birmingham Dental School and Hospital which was inaugurated in 2016. It includes integrated clinical and research facilities which are close to the Edgbaston campus. The clinical facilities are shared with the Birmingham Community Health Care Trust and provide dedicated care to the West Midlands. Dentistry offers the BDS course which is run over 5 years and has an intake of approximately 80 undergraduate students every year. We also offer a number of post graduate courses with a sizeable international reach. Our research is world leading and is facilitated by the integrated research facilities. Our staff and students also have access to further facilities on the Edgbaston campus which is easily bookable, and all staff are open to collaborations. Dentistry at the University continues to grow and is well placed to meet the demands and challenges of the coming years. Our staff are world leaders in dentistry specialties.

Nursing and Midwifery

The department of Nursing and Midwifery is forward thinking and innovative, developing, and nurturing future leaders with the knowledge and skills to improve lives and health around the world. We are positioned to develop the next generation of nurses, midwives and advanced practitioners who are reimagining ways of transforming the health and wellbeing of people and populations

through our commitment to quality education, research, and care delivery. We work closely with service partners driving innovation through advanced practice and clinical academic endeavour. Our contemporary research is interdisciplinary and international, focused around two themes:

- Risk, abuse and violence (RAV)
- Research in end-of-life, advanced illness, complex health, and social care (REACH)

Globally we are ranked in the top 100 schools of nursing (QS World Rankings).

Pharmacy

The department of Pharmacy is dedicated to the safe and effective use of medicines to improve health, through the provision of high-quality education and world class research. Our innovative clinically orientated [MPharm](#) undergraduate programme delivers high quality education for future pharmacy leaders. Our focus on prescribing excellence is reflected in our [Independent Prescribing Programme](#), as well as the national eLearning programme [SCRIPT](#) which is delivered to over 55,000 NHS staff.

Research in Pharmacy focuses on four main scientific disciplines:

- Organic and inorganic medicinal chemistry
- Pharmacology
- Drug delivery and nanomedicine
- Clinical pharmacy and medicines safety

School of Infection, Inflammation and Immunology

Immunology and Immunotherapy

The department of Immunology and Immunotherapy builds on the longstanding tradition of research in immunology at the University. Our department has a strong reputation for discovery science and the translation of our findings into the clinic for patient benefit.



The department hosts the recently renewed £30 million NIHR Birmingham Biomedical Research Centre (BRC), providing improved therapies for a range of themes. We additionally play a central role in directing the Birmingham Experimental Cancer Medicine Centre (ECMC), jointly funded by Cancer Research UK and the NIHR, aiming to translate Birmingham-led discovery science in field such as genomic and immunology into the clinic. The department also hosts the £5.84 million Bacterial Vaccines (BactiVac) network, which accelerates the development of vaccines against bacterial infections relevant to low and middle-income countries. It is the first network of its kind to focus

specifically on bacterial infections.

Clinical Immunology Service

Our centres of excellence in translational research are supported by our Clinical Immunology Service (CIS), a major testing centre for multiple myeloma, leukaemia/lymphoma, immunodeficiency, autoimmunity, renal and rheumatic diseases, and a World Allergy Organisation

centre. CIS is also a key contributor of immunological assays to a number of high profile national and international clinical trials.

Inflammation and Ageing

Our department of Inflammation and Ageing focuses on the diagnosis, prognostication, and treatment of acute and chronic inflammatory diseases across the life-course. We include five themes: acute care, ageing and sarcopenia, neuroscience and trauma, ophthalmology, rheumatology.



We house several centres of excellence, including:

- [Versus Arthritis Research into Inflammatory Arthritis](#) (with Glasgow, Newcastle, and Oxford Universities).
- [MRC-Versus Arthritis Musculoskeletal Ageing Research](#) (with Nottingham University).
- [Scar Free Conflict Wound Research](#).
- [NIHR/MoD Surgical Reconstruction and Microbiology Research](#).
- Three [NIHR BRC](#) themes: Infections and acute care, Rheumatology, Sarcopenia and Multi-morbidity.
- [PIONEER: Health data hub in acute care](#).

Microbes, Infection and Microbiomes

The department of Microbes, Infection and Microbiomes is home to world leading academics working across pathogen biology, microbial genomics, and human microbiome research with a clear emphasis of research with importance to human health.



The department co-hosts a theme in our NIHR BRC (Infections and Acute Care) and is home to the only MHRA approved Microbiome Treatment Centre in the UK, providing faecal microbiome transplants to patients with recalcitrant *C. difficile* infections. We also have one of the largest portfolios of UKRI funded Antimicrobial resistance projects in the UK, a vitally important research area in which we are world renowned. At the heart of everything we do is an unwavering dedication to ground-breaking, fundamental microbiology research – something that has been integral to the University of Birmingham since its foundation more than a century ago.

Biomedical Sciences

Biomedical Sciences has been running for over 20 years and have produced thousands of highly successful biomedical scientists and professionals. Recently we have established the new Biomedical Science MSci course that will cover the major disciplines of biomedical science as well as providing students with professional development and entrepreneurial opportunities including good clinical laboratory practice (GCLP), business and enterprise and governing regulatory roles. We are proud to offer students the opportunity to work alongside leading researchers and take advantage of our well-established links with major national centres for research and the local NHS on a daily basis.

Education

Each year the College trains more than 350 medical students. Nearly one third of our medical students intercalate on a choice of programmes after the second, third or fourth year of their course. We also train 70 dental students, over 170 biomedical science students, over 150 nursing students, over 150 pharmacy students and 40 physician associate students.



There are also approximately 850 postgraduate taught students and nearly 500 postgraduate research students in the College, managed by a cross-College Graduate School. The College has excellent library and reference facilities, including the Barnes Library and Doug Ellis Learning Hub, which complement the wider facilities available to students on campus. Around 1500 students each year join us on undergraduate, postgraduate taught and research programmes. These students come to us from around the globe and represent over 80 countries.

Our educational programmes in Dentistry, Pharmacy, Nursing and Midwifery, Biomedical Sciences, and the Birmingham Medical School support increased recognition of the value of education and teaching contribution through an enhanced emphasis on pedagogy. First-class teaching is crucial to ensure that our students – the biomedical and healthcare workforce of the future – get the very best out of their time at Birmingham; delivering an outstanding student experience is a top priority.

We are committed to providing students from all backgrounds with the opportunity to discover education and research in biomedical sciences and healthcare. We deliver a range of widening participation activities to bring students onto campus allowing them to explore what it is like to be a student at our University while giving them an insight into the courses they could study here and the pioneering research underpinning them; almost 3,500 students have received support from our extensive widening participation activities over the last 10 years and around 15% of our medicine intake is now from under represented backgrounds.

Our employability rates within the College are excellent, with 95% of all surveyed students achieving employment within a year of study. [Some notable alumni are in influential positions all around the world.](#)

UK league tables:

- Times 2023: Ranked 10th for Dentistry, 15th for Pharmacology & Pharmacy and 15th for Medicine.
- Complete University Guide 2024: Ranked 10th for Biomedical Science, 10th for Dentistry, 11th for Pharmacy, 15th for Nursing and 19th for Medicine.
- Guardian 2024: Ranked 14th for Biomedical Science (previously Anatomy & Physiology), 8th for Dentistry.

Global league tables:

- QS World rankings 2025: 67th for Medicine, 36th for Anatomy & Physiology, 23rd for Dentistry, with Nursing and Pharmacy & Pharmacology both ranked in the top 100. The Life Sciences and Medicine overarching faculty area is ranked 59th in the world.
- US News rankings 2023: 26th for Surgery, 37th for Endocrinology and Metabolism, 58th for

Cardiac and Cardiovascular Systems, 14th for Gastroenterology and Hepatology and 65th for Clinical Medicine.

- Shanghai rankings 2022: 22nd for Dentistry and 51st – 75th for Clinical Medicine.
- Times Higher Education rankings 2024: 74th for Clinical & Health



Working in partnership

Birmingham Health Partners

Our partnership working with regional NHS Trusts is very strong, as exemplified by [Birmingham Health Partners \(BHP\)](#), an exciting collaborative platform between the University of Birmingham, University Hospitals Birmingham NHS Foundation Trust, Birmingham Women's and Children's Hospitals NHS Foundation Trust, Sandwell and West Birmingham Hospitals NHS Trust, Royal Orthopaedic Hospital NHS Foundation Trust, West Midlands Academic Health Science Network and Aston University.

BHP has an outstanding healthcare infrastructure based on a campus that encompasses renowned hospitals, world-class multi-disciplinary research facilities, clinical and industry-focused space, and a range of flagship national centres of excellence. Globally Birmingham is one of the few cities that can deliver such comprehensive co-located expertise.

The co-location of the partners allows BHP to deliver an integrated approach to research and healthcare innovation; working together to shape the future of healthcare to benefit our communities and change lives.

BHP leads one of six sites across the UK created to address challenging healthcare issues through use of data science, funded by £30 million from Health Data Research UK. The University of Birmingham and University Hospitals Birmingham NHS Foundation Trust form part of the Midlands site, together with the Universities of Leicester, Nottingham, and Warwick.

Birmingham Health Innovation Campus

[BHIC](#) is a world-leading life sciences campus, currently being developed through a long-term collaboration between the University of Birmingham and experienced investor-developers Bruntwood SciTech. Phase 1 of the ten-year masterplan will offer 133,000 sq. ft of premium lab and office space for forward-thinking businesses in the health and life sciences sector and provide unique opportunities for collaboration between clinical and academic experts. It will be home to the Precision Health Technologies Accelerator ([PHTA Ltd](#)), the University of Birmingham's flagship life sciences innovation and incubation facility which will bring entrepreneurs, start-ups and scale-ups together with the next generation of academic and clinical leaders, creating unique opportunities to commercialise ideas and accelerate the rapid development of cutting-edge therapies and technologies.

Working closely alongside Birmingham Health Partners, PHTA offers access to a wide range of clinical research, trials, and health data, as well as opportunities to work with leading teams and key opinion leaders across the academic and clinical spectrum.

Institute of Translational Medicine

The £24 million [Institute of Translational Medicine \(ITM\)](#), which sits between the College and University Hospitals Birmingham NHS Foundation Trusts, bringing together world class clinicians, scientists and clinical trials teams to accelerate access to new diagnostics, drugs and medical devices thereby enabling patients to benefit more rapidly from breakthrough therapies and technologies.

Collaboration

Our cross-campus collaborations within the University are vital, to share expertise and knowledge across disciplines, as well as facilities, equipment, and resources. We have strong relationships with all other University Colleges, from mental health research with the College of Life and Environmental Sciences to health technologies collaborations with colleagues in Engineering & Physical Sciences, health management with Social Sciences and regulatory science with Arts &



Law.

In addition to the NHS Trusts in our immediate vicinity, the College works closely with many of the teaching hospitals, clinical commissioning groups (CCGs) and training practices across the West Midlands. We have particularly strong research links with Sandwell and West Birmingham Hospitals NHS Trust, which hosts much of our clinical academic work in rheumatology, ophthalmology, and cardiology.

We also partner with many other Universities both in the UK and overseas on collaborative research projects and split site PhD opportunities. These collaborations maximise our research outputs and provide PhD students with opportunities to broaden their knowledge and skills across multiple world leading institutions.

Facilities

Situated in the largest healthcare region in the country, with access to one of the largest and most diverse populations in Europe, the College is perfectly positioned to address major global issues and diseases affecting today's society.

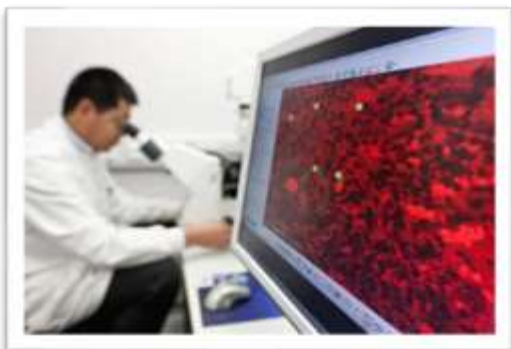
The principal base of the College is on the University's main campus in Edgbaston, adjacent to the Queen Elizabeth Hospital Birmingham and Birmingham Women's Hospital. Other College buildings are located on and off campus, including [Birmingham Dental Hospital](#).



The College has a vast and impressive range of facilities that support both its teaching and research activities. Researchers have access to world leading facilities which are equipped with the latest cutting-edge research instrumentation and managed by highly trained technical staff.

Research Facilities

Our outstanding facilities and strong ethos of partnership working, combined with multi-disciplinary academic excellence across the University and a diverse regional population of over five million mean that Birmingham is ideally placed to occupy a world-leading position in the rapidly evolving Life Sciences sector.



Cross-College enabling technologies platforms support and strengthen our research in key areas including sequencing, mass spectrometry, whole organism and cell imaging, cell sorting, and flow cytometry and NMR based metabolomics and structural biology. This is supplemented within the College by our protein expression, genome editing and intra-vital imaging facilities. [A full list of our research facilities can be found here.](#)

Equality, Diversity, and Inclusion

Equality, diversity, and inclusion (EDI) is at the heart of the College's strategic vision and is something that the College Board takes very seriously.

The College's EDI team drives and embeds behavioural and cultural change; by promoting EDI events, developing, and signposting EDI -related policies and services, exploring barriers to success and providing scrutiny and advocacy for strategic decisions.

The College was awarded an Athena SWAN Silver Award in 2020 in recognition of long-term progress toward gender equality and has a race equality action plan as part of the University's Race Equality Charter Bronze award. The College's EDI team maintain strong relationships with the University's Staff Networks for disabled staff, LGBTQ+ staff, parents and carers, race equality, and women to ensure these groups have input into plans and policies and so equality issues can be flagged.

We work hard to effect positive change, such as a training a network of Speak Up Guardians and Mental Health First Aiders, providing comprehensive support for academic promotion applicants and funding for caring costs for any staff attending conferences/training. We also host a programme of events to raise awareness and celebrate the diversity of our College's community throughout the year.

The University

The University of Birmingham was founded on the vision of Joseph Chamberlain in 1900 to provide a university for the people of Birmingham, 'a great school of universal instruction... taking all knowledge in its province'. This philosophy has defined and shaped us as an institution for our city ever since, founded on equality of opportunity for all.

We are proud to continue to find new expressions for these civic roots. The University is now a global institution, with our doors open, welcoming the best to Birmingham, and taking the best of Birmingham to the world.

Ranked 80th globally, Birmingham is a member of the Russell Group and a founder member of the Universitas 21 global network of research universities. We ranked 1st out of Russell Group institutions in Great Britain for UK domiciled graduates in sustained employment and/or further study five years after graduation. Ten of our alumni and staff have been recognised with Nobel Prizes, and many others are recipients of the most prestigious awards in their fields. We rank highly amongst employers seeking to recruit graduates.



Our heritage as the original 'redbrick' is combined with an ambitious agenda to continue the transformation of the University. In recent years we have significantly increased the number of leading academic colleagues and have undertaken a £1 billion renewal of the campus estate. We have established our own non-selective secondary school and sixth form serving the diverse

communities of Birmingham and have just opened our new campus in Dubai. In the 2024 QS World Sustainability Ranking, we were ranked 35th.

With more than 40,000 students, our teaching is worth £1.3 billion to the economy and the University has trained more than 5,300 teachers, social workers, nurses, doctors, and dentists. We have 390,000 alumni across the world, the majority of whom believe that their degree helped them get a better job and prepared them for their career.

Our research and knowledge transfer activity contributes £1.4 billion to the economy, and every £1 million of research income generates £6.49 million of impact in the UK economy.

We take our role seriously as an anchor institution for the UK's diverse, youthful, and dynamic second city, and are one of the largest employers in the region. We value our partnerships with local organisations including through our Civic University Agreement signed with Birmingham City Council and the West Midlands Combined Authority. Through The Exchange we now have a city centre base from which to work with partners. We are currently working with Bruntwood SciTech and NHS partners to develop the Birmingham Health Innovation Campus.

Birmingham 2030 strengthens our commitment to sustainability as one of the core pillars of our activity. This includes using our research and education to make a major global contribution to the UN Sustainable Development Goals, and a headline aim to be net zero carbon for scope 1 and 2 by 2035 and overall, by 2045. We are active partners in Birmingham's Tyseley Energy Park developing new technologies to contribute to Birmingham's net zero ambitions.

Birmingham 2030 Strategic Framework

Through our Birmingham 2030 Strategic Framework we have set an aspiration to become a top 50 global institution. We recognise this is a genuinely challenging aim, which will require a vibrant, intellectually exciting, and diverse University community for research and education, as well as working closely with our partners in Birmingham and around the world.

With world-class research and outstanding global education as our core mission, we will strive to increase the volume and quality of our research to make an even greater difference to the world around us. We will be the UK's exemplary civic university, remaining firmly committed to our foundations in the highly diverse communities, people, and economy of the city of Birmingham and the West Midlands.

A link to the Birmingham 2030 Strategic Framework can be found here: www.bham.ac.uk/2030

Student Experience

We have been encouraging independent thinking and providing academic programmes that stretch and challenge for more than a century. Our stunning Edgbaston campus is a distinctive element of the experience we offer to our students.

Centred around the Green Heart, one of the largest open green spaces of any UK University, our 672-acre campus also includes The Vale student accommodation village, set around a lake in its own beautiful parkland. Our research enhances and reinforces our teaching, and we value and reward teaching quality. We have continued to provide in-person teaching through the pandemic and have blended this with enhanced digital learning. Our student experience is enriched by a huge range of extra-curricular opportunities from sport and music to volunteering.

A University of Birmingham degree is valued by the country's top employers, founded on our commitment to provide our students with both an outstanding education and the intellectual confidence, knowledge, and skills required to thrive in their careers and make a difference in the world. We are pleased with our high rates of graduate employment, and our students are the most frequently targeted of any university by the country's top employers looking for graduate recruits.

Our student population has increased by over 4,000 since 2009-10, and we now have a total student population of over 25,000 undergraduate and 13,000 postgraduate students. We are a global community, with nearly 11,000 international students studying either at Edgbaston or overseas (at our Dubai campus, through our partnership with Jinan University, and on distance learning courses). We have 2,500 students undertaking distance learning courses.



Exceptional Research

The University is one of the UK's most successful institutions in terms of research. In the latest Research Excellence Framework, we were placed 13th in the UK in terms of GPA, with the highest rise in position of any Russell Group university. This included a significant rise for the Birmingham Business School. Our areas of research excellence are unusually comprehensive for a UK university, with a submission to 28 of a possible 34 Units of Assessment in the REF2021. The total value of research funding won by the University has grown rapidly to over £200 million per annum for the last two years. We have a portfolio of over 2,600 live projects with an award value to the University of over £900 million.

Our academic community achieves remarkable things. We are proud that the University has contributed to the national and international response to Covid-19, drawing on our expertise across our disciplines including virology, immunology, business, economics, law, and social sciences.

As a comprehensive university, the breadth of our subject base creates many opportunities for inter-disciplinary research to solve global challenges. These are encouraged by our Institute for Global Innovation (IGI), as well as our close collaboration with industry, business, and healthcare.

Our robust industrial partnerships support enterprise and innovation across a number of sectors, working with companies as diverse as Siemens, AstraZeneca, and the Royal Shakespeare Company, and drawing on our innovation assets such as the Birmingham Health Innovation Campus and the Manufacturing Technology Centre in Ansty, near Coventry.

We support academics to engage with policy makers, and through the work of University of Birmingham Enterprise, manage the University's extensive technology transfer and academic consultancy business, IP protection and spinout portfolio.

We have been integral to some of the greatest scientific discoveries of recent times, such as the discovery of the Higgs boson particle and the detection of gravitational waves. We enjoy world-class expertise in areas as diverse as mental health, Shakespeare, history, conflict and security, psychology, water science, air pollution, corpus linguistics, inter-faith understanding, and character education.

The City of Birmingham

The City of Birmingham has undergone a major transformation in the last decade and regularly features as a top place to visit – in fact, it was the only place in the UK listed in the Rough Guide's Top 10 places in the world to visit in 2015.

In a recent Sunday Times/Zoopla report, 'Best Places to live in Britain,' three areas of Birmingham all made the top 50 best places to live in Britain, with the suburb of Moseley being voted the overall winner.

A city of historical interest and contemporary vision, Birmingham has a rich and diverse community that creates a vibrant, multicultural, and exciting place to live and work.

The city is home to the internationally renowned Birmingham Royal Ballet and one of the world's greatest concert venues: Symphony Hall. The City Museum and Art Gallery houses the world's finest collection of Pre-Raphaelite paintings, alongside a major collection of Old Masters, Modern and Contemporary pictures, while the iconic Bullring is one of the largest dedicated shopping facilities in Europe. Sports and recreation are also well served; the city offers international Test cricket, top-flight football, international championship golf and tennis, and top-class rugby. As a multicultural city, Birmingham is also renowned for the breadth of its cuisine and has more Michelin starred restaurants than any other English city outside London.

Birmingham is within an hour's drive of Stratford-upon-Avon and the Cotswolds. From Birmingham International Airport, more than 50 different airlines operate scheduled services to 100 destinations worldwide. The University has its own dedicated railway station, while 50 million passengers a year use Birmingham New Street Station, and the city will be a major hub for the UK's new high-speed rail network. London is 80 minutes away by shuttle service, with trains every 20 minutes.



Equality, Diversity and Inclusion

The promotion of equality, diversity and inclusion is central to the mission and vision of the University of Birmingham. On our founding in 1900, a core commitment was to accept women and people of all religious backgrounds as equal members of the University community. Today, challenging discrimination, addressing inequalities, and promoting greater understanding continues to be one of the key challenges we face as part of a globalised society.

We are committed to creating and maintaining an inclusive learning and working environment where discrimination is not tolerated, where all members of the University can flourish and reach their full potential; where we engage with and learn from our community and where we affect positive change within the University, our city and wider society. We see this as integral to our mission and vision as a global university.

Our Equality, Diversity & Inclusion Scheme 2021 – 2024 sets out our objectives and actions based on the inter-locking themes of:

- Creating an inclusive environment: developing a University community where everyone feels welcome, included and empowered to succeed
- Dismantling barriers: addressing the structural barriers faced by groups within the University in order to create more equitable outcomes
- Integrating equality, diversity and inclusion: issues and impacts are considered and addressed across our activities

We are proud holders of the Advance HE Race Equality Charter and Athena Swan Charter, with a majority of our Schools also holding Athena awards, including the Business School. We are actively working to increase our proportion of senior female academics, the number of people from minority ethnic groups we employ and the degree awarding gap. In November 2020 the University formally adopted the IHRA definition of Anti-Semitism – this is in parallel with our existing expectations that all members of the University community should be treated with dignity and respect and that there is no place on our campus nor within our community for any form of discrimination. We are also members of Stonewall's Workplace Equality Index and Global Champions.