



UNIVERSITY OF
BIRMINGHAM



**Director of the Institute for
Interdisciplinary Data
Science and AI**

Information Pack

We advance
We activate
birmingham.ac.uk

Contents

1. About University of Birmingham
2. Our community
3. Research and innovation
4. Student experience and learning
5. Our global outlook
6. Our commitment to civic engagement
7. Enjoy living in the UK's most diverse city
8. The Institute for Interdisciplinary Data Science and AI (IIDSAI)
9. Role Profile
10. More information and how to apply

1. About University of Birmingham

In 1900, we were founded on the radical vision of Joseph Chamberlain to provide a university for the people of Birmingham - 'a great school of universal instruction... taking all knowledge in its province'. England's first civic University, we were established as a place where students and staff from all backgrounds are accepted on an equal basis. This philosophy has defined and shaped us as an institution ever since and remains even more important today.

Over the last nearly 125 years, we have grown our civic roots to become a global institution that extends our reach

across the world - welcoming the best to Birmingham and taking the best of Birmingham to the world.

Ranked in the top 100 universities globally, we are part of the Russell Group and a founding member of the Universitas 21 global network of research universities. The quality of our research is amongst the best of UK universities, with the 2021 Research Excellence Framework (REF) results ranking us 13th in the UK and 10th in the Russell Group for Grade Point Average.

Combining an original 'redbrick' heritage with an ambitious transformation agenda, we recently opened an international campus in Dubai, alongside offices in India and China. We have invested £1 billion in our facilities and campus over the past ten years, spanning student experience, teaching and learning, and importantly, in world-leading research facilities.

An anchor institution for the UK's diverse, youthful, and dynamic second city, we are one of the region's largest employers. We played a central role in the success of the Birmingham 2022

Commonwealth Games, and value our partnerships with local organisations, including our Civic University Agreement with Birmingham City Council and the West Midlands Combined Authority.

Our **Birmingham 2030 Strategic Framework** sets out our goal to become a top 50 global institution. With world-class research and outstanding global education as our core mission, we will strive to increase the volume and quality of our research to make an even greater difference to the world around us.



2. Our community

We strive to provide a welcoming and inclusive environment for everyone in our community. Our diversity is a major source of strength that underpins the exchange of ideas, innovation and debate at the heart of our academic mission. This is why we want to recruit people from different fields, backgrounds, and from countries around the world.

At Birmingham, we teach and carry out research across the full breadth of academic disciplines. This creates a vibrant community and provides multidisciplinary opportunities for research and education. Our truly international community is made up of more than 8,000 staff, 38,000 students and over 350,000 alumni.



Our student community is not only one of the largest of any UK university - it's also highly diverse. 86% of our home undergraduate students come from state schools. 43% are from black, Asian, or other minority ethnic backgrounds. While 36% are the first generation of their family to attend university. Our Equality, Diversity & Inclusion Scheme 2021 – 2024 sets out our commitment to:

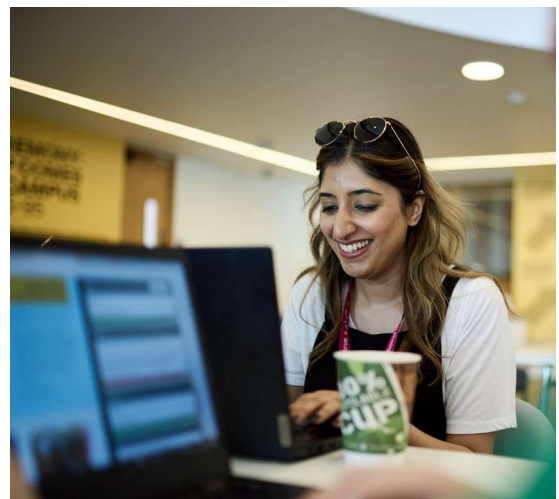
- Create an inclusive environment: developing a University community where everyone feels welcome, included and empowered to succeed;
- Dismantle barriers: addressing the structural barriers faced by groups within the University in order to create more equitable outcomes;
- Integrate equality, diversity and inclusion: issues and impacts are considered and addressed across our activities.



We hold a Bronze Race Equality Charter Award and a Bronze Athena SWAN Charter Award at an institutional level, with the majority of our Schools holding Bronze or Silver Athena SWAN awards.

Our most recent staff survey shows levels of engagement and pride most employers would be delighted to achieve. Committed to building on this, we have made **'people and culture'** a core pillar of our Birmingham 2030 Strategic Framework.

We also support the career development of our academic staff through our **Birmingham Academic Career Framework** that inspires and develops and maintains an academic culture of intellectual stimulation and high achievement.



3. Research and innovation

We have a global reputation for both high-quality fundamental and translational research.

Our academic community achieves remarkable results and impact. They have been at the heart of some of the greatest scientific discoveries of recent times, from the discovery of the Higgs boson particle, to detecting gravitational waves, and most recently making a major contribution during the Covid-19 pandemic.

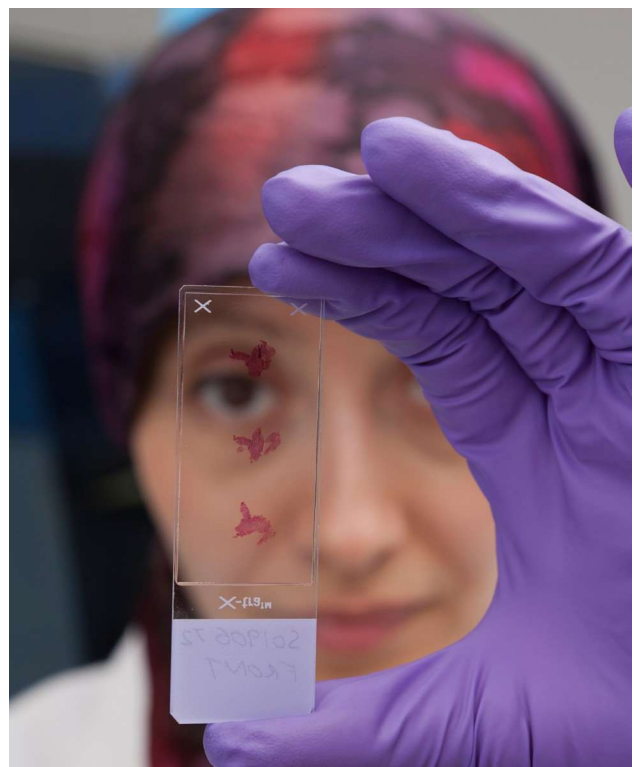
For a UK university, our areas of research excellence stand out as highly comprehensive, with a submission to 28 out of a possible 34 Units of Assessment in REF 2021. Our 13th position in the subsequent rankings, placed us amongst the UK's best universities. 50% of our research was recognised as world leading, and our 12-place increase was the largest rise achieved by any Russell Group university.

The total value of our research funding has grown, reflecting our continued rise in quality. . We now have a portfolio of over 2,800 live projects with an award value to the University of over £900 million.

Across our campus, stretching into the city beyond, we have built a suite of innovation sites and strategic assets which are helping us to develop and test novel technologies in our areas of technical excellence including, energy, engineering, and life sciences.

Our extensive cultural artefacts and collections, across religion, history and the arts, are helping bind us more closely to our communities. **[Read more here about our innovation sites.](#)**

Our strong performance in REF21 underlines the strong collaborations we have, including with industry and the health, education, and cultural sectors. By working in partnership with others in our region and across the world we are delivering solutions to address challenges. To reflect our focus, we have developed five distinctive challenge-led research themes: Global Health, Thriving Planet, Connecting Cultures, Life-Changing Technology, and Fairer World, in which we are now seeking applications from individuals who can make a significant contribution.



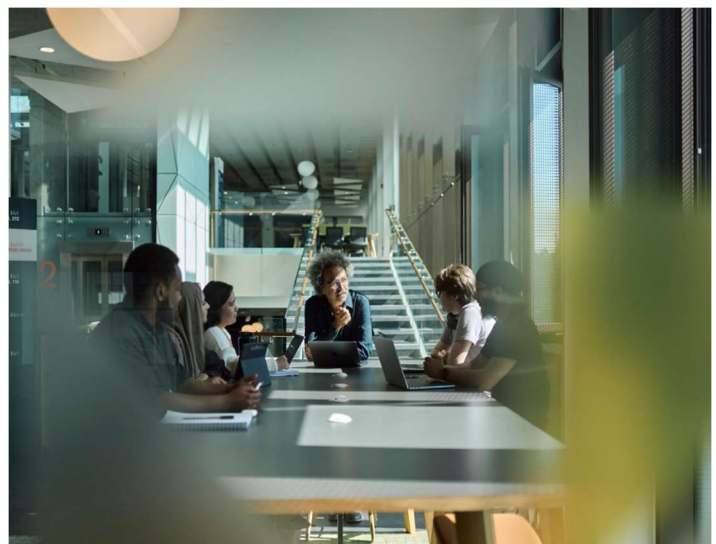
4. Student experience and learning

At Birmingham, our research enhances and reinforces our learning experience. We value and reward teaching quality and have applied what we have learnt from the Covid pandemic to improve our in-person teaching with enhanced digital learning. Our inclusive and intellectually challenging education programmes are underpinned by cutting-edge knowledge and taught by leading researchers to encourage independent thinking and develop the next generation of leaders, innovators and problem-solvers.

We are proud of our high rates of graduate employment. Our students are the third most targeted by the UK's leading employers looking for graduate recruits (High Flyers Graduate Market,

2023). Our students continue to flourish on leaving the University, joining employers such as the NHS, KPMG, Network Rail, Jaguar Land Rover, Arup, Deloitte, and BT.

A distinctive element of student experience is learning within our green campus, which is one of the largest open green spaces of any UK University. Our 672-acre Edgbaston campus includes The Vale student accommodation village, set around a lake in its own beautiful parkland. In recent years, we have made major investments in a new main library, the Collaborative Teaching Laboratory, a Teaching and Learning Building, and sports centre.

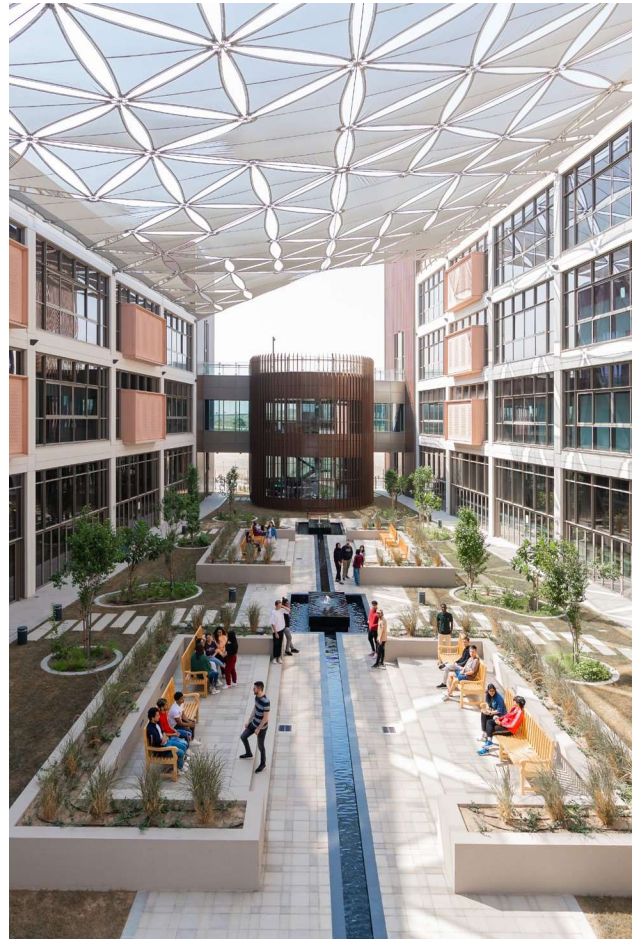


Opened in 2021, our Dubai campus is a permanent academic home for up to 2,900 students, a community for Birmingham alumni in the region and a hub for community outreach and engagement activities.

Our online learning offering also provides students the flexibility to study alongside their current professional and personal commitments. UOB Online offers programmes that have been purpose-built from the ground up to harness the full power of the technologies available, involving everything from cloud-powered collaboration to interactive live lectures.

We now welcome a total student population of over 25,000 undergraduate, 13,000 postgraduate and 2,500 distance learning students. Home to a diverse global community, we have nearly 11,000 international students studying either at Edgbaston, on our distance learning courses or overseas at our Dubai campus or through our partnership with Jinan University.

University of Birmingham Dubai



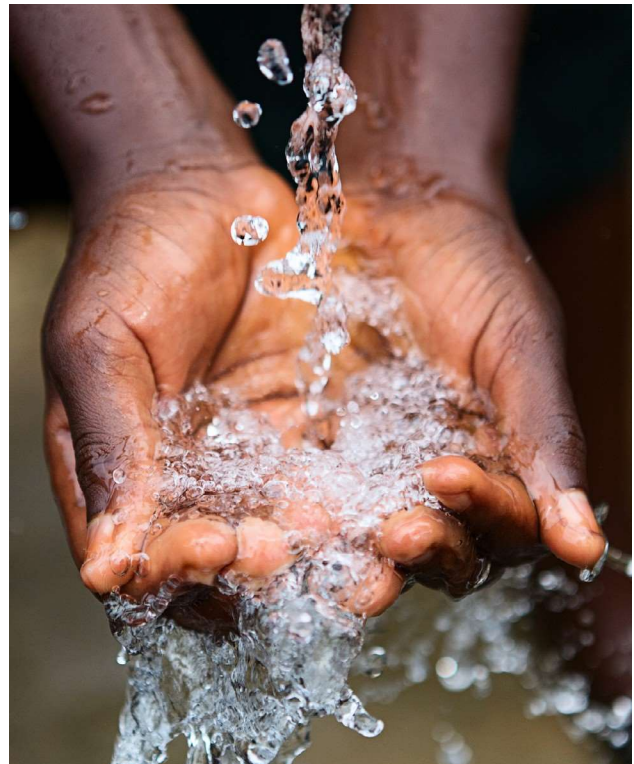
5. Our global outlook

Our international strategy is focused around attracting the very best global talent to study and work at Birmingham. We also seek to extend our reach and influence, producing the very best impactful research through our global collaboration, contributing to the priority regions where we engage, with regional institutes creating a powerful focus for our engagement.

In North America, our signature partnership with the University of Illinois Urbana-Champaign has grown to over 70 successful faculty-to-faculty links in key academic disciplines thanks to a successful framework for continued collaboration and investment. Our more recent partnership with McMaster University is supporting research in healthy ageing and climate action.



Europe represents a major strand of our global engagement, with an exceptionally strong performance in Horizon Europe grants that we will build post UK association. Signature partnerships include those with Leiden University in the Netherlands and with the Fraunhofer Institute and the Federal Institute for Materials Research and Testing in Germany. More recently, we have launched a #TwinforHope partnership with Ivan Franko National University, Lviv



Our China Institute supports sister-city links with both Guangzhou and Nanjing with developed research platforms in healthcare, advanced manufacturing, through to new energy initiatives and healthcare technology innovation. Our India Institute supports a range of partnerships in India, notably establishing joint postgraduate programmes between IIT Madras and Birmingham, which is the first such education partnership at Masters' level between any IIT and a UK Russell Group University.



Our China Institute supports sister-city links with both Guangzhou and Nanjing

Through purposeful investment in Brazil for over 10 years, we have established research partners in health, nanotechnology, environmental science, transport and energy, leading us to inaugurate a new Brazil Institute in 2023.

Our campus in Dubai has enabled us to establish extensive partnerships in the region, including a long-term agreement with the Roads and Transport Authority (RTA) of Dubai that sees the RTA leasing space at our campus for its Innovation, Research and Development Centre, supporting the next generation of UAE transport engineers.



Our work in Brazil led to the inauguration of the Brazil Institute in 2023



The India Institute works research areas such as air pollution

6. Our commitment to civic engagement

As the original 'civic' university, we believe in sharing knowledge and making the best education accessible to all in our city. Which is why we are expanding our contribution to the local educational ecosystem and are involved with a diverse range of cultural and widening participation initiatives. Our Civic University Agreement underpins our contribution to the economic, cultural and educational work of our region.

Located at the heart of Birmingham city centre, **The Exchange** uses our research, teaching and local, national and international networks to create a place of curiosity, celebration, collaboration and change. Home to a policy institute and a business incubator for students and graduates, The Exchange provides a base for teaching in leadership, executive education and in-demand skills.



Set to become a world-leading healthcare technologies hub developing and applying leading-edge academic research, Birmingham Health Innovation Campus will open in 2024. Led by Birmingham Health Partners, and located adjacent to both the University and the Queen Elizabeth Hospital, it will offer high quality laboratory, office, incubation and innovation facilities for forward-thinking businesses and will be part of an integrated, physically connected critical cluster of patient-centred health excellence.



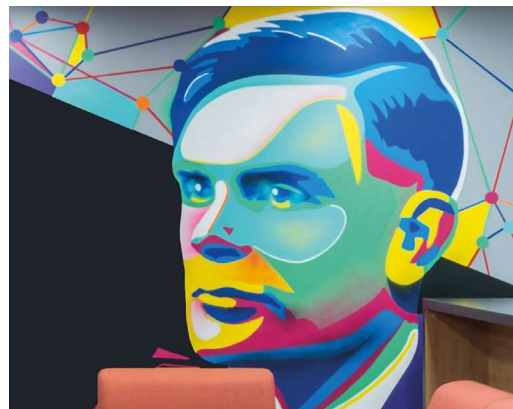
The Exchange, Birmingham

The University of Birmingham School is a centre of teacher education in the region. Already one of the most diverse schools in the city, we are proud of the 'Good' rating it secured in its first Ofsted inspection – the best possible rating at this stage in its development.

Our sector-leading widening participation programmes engage with more than 10,000 students in the West Midlands every year. Supporting students from less advantaged backgrounds and non-selective state schools, these programmes significantly increase the chances of them attending a Russell Group university.



Our fundraising and volunteering campaign 'Birmingham In Action' aims to transform lives for our generation and the next by tackling the world's biggest challenges, today. It's one of the largest fundraising campaigns in the modern history of UK higher education and supports some of the most important areas of work in the University, including access to education, youth mental health, cancer, refugees and the environment.

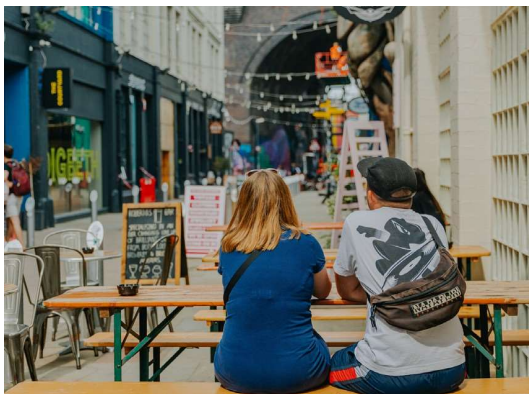


Turing University Network

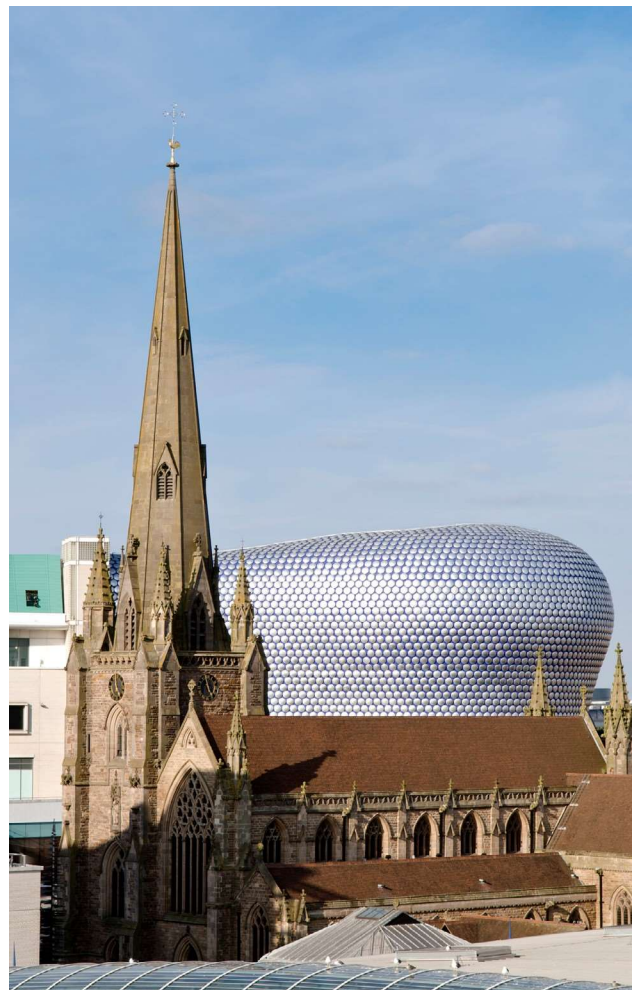
7. Enjoy living in the UK's most diverse city

Birmingham has experienced a major transformation over the last decade. Home to a vibrant and multicultural community, our city is an exciting place to live, work and visit.

Combining a rich cultural heritage with a contemporary vision, Birmingham has something to offer everyone. The city is home to the internationally renowned Birmingham Royal Ballet and Symphony Hall, one of the world's greatest concert venues, and iconic Bullring, one of Europe's largest dedicated shopping facilities.



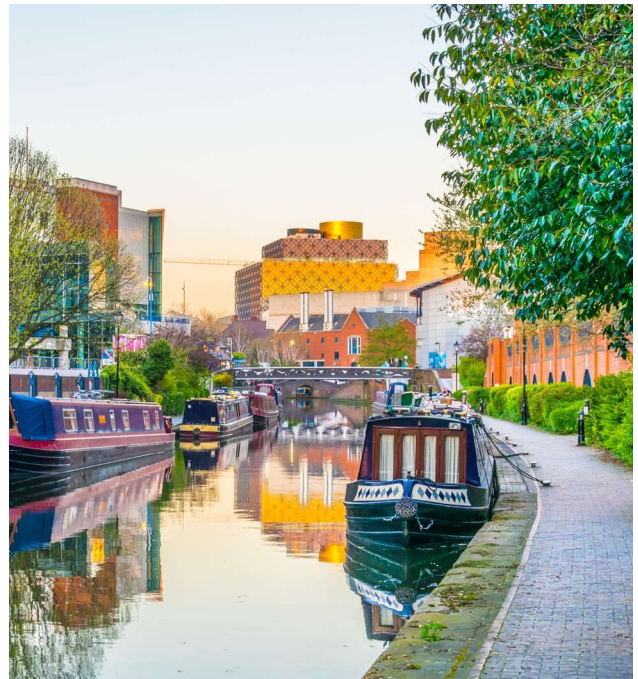
The Birmingham 2022 Commonwealth Games was the largest multi-sport event to be held in England in 10 years, and was supported by the most comprehensive University partnerships in the history of the Games. Birmingham also offers international test cricket, Premier League and Championship football, top-class rugby and international championship golf and tennis.



As a diverse, multicultural city, Birmingham is renowned for the breadth of its cuisine and has more Michelin starred restaurants than any other English city outside London. The city is also home to quality schools and a choice of housing, from city centre flats to detached houses in the suburbs.

A recent 'Best Places to live in Britain' report by Sunday Times/Zoopla, put three areas of Birmingham in the top 50 best places to live in Britain, with the suburb of Moseley voted the overall winner.

Further afield, Birmingham is within an hour's drive of Stratford-upon-Avon and London Euston can be reached in as little as 79 minutes, with trains running every 20 minutes. We have our own University train station that connects to Birmingham New Street Station that is used by 50 million passengers every year. Through Birmingham Airport you can also access the world with more than 50 airlines operating scheduled services to 100 destinations across the globe.



8. The Institute for Interdisciplinary Data Science and AI (IIDSAI)

The Institute at the University of Birmingham, is a nexus for collaborative interdisciplinary research in all aspects of the AI and data-driven future society and is the University's base for a number of strategic relationships, including various industry and governmental partners and the Alan Turing Institute, as a Turing University Network member. Working across disciplines and with a range of strategic external partners, the Institute acts as a focal point of activity, knowledge exchange and continuous interaction to develop and apply cutting-edge data-driven technologies in important areas including sustainability, well-being, health, and data-driven science.

Together with the Birmingham Institute for Sustainability and Climate Action, IIDSAI has its home in the recently renovated Elm House, a building fully dedicated to open, inclusive and inspiring research spaces for academics and their collaborators. In addition, the University of Birmingham offers exceptional High Performance Computing facilities, including through the Tier-2 Baskerville system.

Please visit this link for more information on the Institute: [Institute for Interdisciplinary Data Science and AI \(birmingham.ac.uk\)](https://www.birmingham.ac.uk/iidsai).



9. Role profile

Job Summary

The Director role is a senior academic appointment, for an individual who not only is an outstanding researcher and educator, but one who is able to provide strategic leadership and engage creatively and productively with colleagues from multiple disciplines and with an understanding of the data sciences and AI and their social, legal and ethical implications.

This appointment is on a 4 year basis, reporting to the Pro Vice-Chancellor of Research. It is a full-time appointment, with 0.6 FTE spent on the Director role and 0.4 FTE on your own Professorial role. Whilst the following role profile focuses on the Director role, the full Professorial profile can be found here [Professorial role profile Research and Education.docx \(sharepoint.com\)](#). Expected responsibilities in the Professorial role will be adjusted appropriately to the relevant FTE.

Main Duties

- Lead on finalising the practical aspects of establishing the Institute.
- Lead on the ongoing development, implementation, and review of the Institute's strategy, ensuring that the overarching vision of IIDSAI is aligned closely with the Birmingham 2030 Strategic Framework.
- Foster a creative exchange of ideas in partnership across the University, helping to grow world-class, interdisciplinary, high-impact research on data science and AI.
- Responsibility for the personal and professional development of colleagues and students within the Institute and for managing staff and resources supporting significant research activities.
- Identify and react to data science and AI related external opportunities, providing leadership and expertise to shape these agendas, and utilise personal networks for this purpose.
- Responsibility for actively and strategically building a culture of equality, diversity and inclusivity, embedding this in all behaviors, practices, decision making and initiatives within the Institute.
- Act as an advocate for the Institute and represent and promote the work of the Institute to external audiences, including key policy makers, international organisations, charities, media and research/philanthropic funders with a view to fostering engagement, influence and impact.
- Act as an authority in AI and data science, providing expert advice internally and externally in this field and more broadly, regarding interdisciplinary research.

- Contribute to the development of and lead on the management of budgets and oversee operations in the Institute.
- Lead on connecting the data science and AI community , maximising current assets and resources and optimising opportunities to build partnerships with companies and other Institutes.
- Lead, initiate and promote specific initiatives within IIDSAI, including possible developments in Continuing Professional Development (CPD), pump funding call completions and other events.

Person Specification

Qualities, Skills and Experience

- Ability to operate at Professorial level
- International profile and reputation for excellence, in one or more areas of research across the broad data sciences and AI areas.
- Ability and passion for developing and leading a high-profile research Institute with impact at the global level.
- Experience of establishing national and international networks capable of bringing together global expertise that enhances Birmingham’s research into data sciences and AI challenges.
- Experience of leading, inspiring, and mentoring individuals and teams to not only to perform but to grow and develop in their careers.
- Ability to create a positive community spirit and an inclusive and welcoming environment for all staff, students and partners.
- Skills in managing and/or coordinating multiple projects and working collaboratively with scholars and professional services colleagues.
- Ability to work across institutional and disciplinary boundaries, from life sciences and medicine to the arts and humanities, policy and industry, and to inspire similar behaviour in others.
- Skills in managing and coordinating multiple projects and working collaboratively with scholars and professional services colleagues.
- Experience of resource planning and management; ability in strategic planning, showing effective implementation and evaluation.
- A PhD or equivalent qualification or equivalent body of work

10. More information and how to apply

The University is committed to building a fully inclusive and diverse community, including in its senior leadership. We welcome and encourage applications from all candidates with the qualifications and experience to undertake this role, particularly women, and people from minority ethnic groups.

We are a family friendly employer, focused on supporting staff to develop and grow their career with us. Find out more about our range of **staff benefits**.

To apply, please submit your application through our jobs website by **Friday 12th April 2024**

Panel and presentation interviews will take place at University of Birmingham early May.

Flexible arrangements will be considered for international applicants and the full process details will be provided if you are shortlisted.

The Lapworth Museum of Geology, University of Birmingham





UNIVERSITY OF
BIRMINGHAM

